

POSSIBLE, IF UNAVOIDABLE, THE CONTRACTOR WILL OBTAIN ANY AND ALL NECESSARY PERMITS INCLUDING, BUT NOT LIMITED TO NPDES, AQUATIC RESOURCES ALTERATION PERMIT(S) CORPS OF ENGINEERS SECTION 404 PERMITS, AND TVA SECTION 26A PERMITS TO DISPOSE OF WASTE MATERIALS.

- 10.4.1. HAZARDOUS WASTE (3.5.5.6) (7.9)
- ALL HAZARDOUS WASTE MATERIALS WILL BE DISPOSED OF IN A MANNER WHICH IS COMPLIANT WITH LOCAL OR STATE REGULATIONS. SITE PERSONNEL WILL BE INSTRUCTED IN THESE REGULATIONS. THE INDIVIDUAL DESIGNATED AS THE CONTRACTOR'S ON-SITE REPRESENTATIVE WILL BE RESPONSIBLE FOR SEEING THAT THESE PRACTICES ARE FOLLOWED. THE CONTRACTOR WILL OBTAIN ANY AND ALL NECESSARY PERMITS TO DISPOSE OF HAZARDOUS MATERIAL.
- 10.4.2. SANITARY WASTE (3.5.5.5)
- PORABLE SANITARY FACILITIES WILL BE PROVIDED ON ALL CONSTRUCTION SITES. SANITARY WASTE WILL BE COLLECTED FROM THE PORTABLE UNITS IN A TIMELY MANNER BY A LICENSED WASTE MANAGEMENT CONTRACTOR OR AS REQUIRED BY ANY LOCAL REGULATIONS. THE CONTRACTOR WILL OBTAIN ANY AND ALL NECESSARY PERMITS TO DISPOSE OF SANITARY WASTE.

- 10.4.3. OTHER MATERIALS
- THE FOLLOWING MATERIALS OR SUBSTANCES ARE EXPECTED TO BE PRESENT ON THE SITE DURING THE CONSTRUCTION PERIOD. (CHECK ALL THAT APPLY)
- FERTILIZERS AND LIME
 - PESTICIDES AND/OR HERBICIDES
 - DIESEL AND GASOLINE
 - MACHINERY LUBRICANTS (OIL AND GREASE)
- THESE MATERIALS WILL BE HANDLED AS NOTED IN THIS SWPPP.

11. **NON-Stormwater Discharges (3.5.5)**
- 11.1. THE FOLLOWING NON-STORMWATER DISCHARGES ARE ANTICIPATED DURING THE COURSE OF THIS PROJECT (CHECK ALL THAT APPLY):
- DEWATERING OF WORK AREAS OF COLLECTED STORMWATER AND GROUND WATER
 - WATERS USED TO WASH VEHICLES OF DUST AND SOIL) WHERE DETERGENTS ARE NOT USED AND DETENTION AND/OR FILTERING IS PROVIDED BEFORE THE WATER LEAVES THE SITE
 - WATER USED TO CONTROL DUST (3.5.3.1.n)
 - POTABLE WATER SOURCES INCLUDING WATERLINE FLUSHINGS FROM WHICH CHLORINE HAS BEEN REMOVED TO THE MAXIMUM EXTENT PRACTICABLE
 - UNCONTAMINATED GROUNDWATER OR SPRING WATER
 - FOUNDATION OR FOOTING DRAINS WHERE FLOWS ARE NOT CONTAMINATED WITH POLLUTANTS
 - OTHER: _____

- 11.2. ALL ALLOWABLE NON-STORMWATER DISCHARGES WILL BE DIRECTED TO STABLE DISCHARGE STRUCTURES PRIOR TO LEAVING THE SITE. FILTERING OR CHEMICAL TREATMENT MAY BE NECESSARY PRIOR TO DISCHARGE.
- 11.3. THE DESIGN OF ALL IMPACTED EPSC MEASURES RECEIVING FLOW FROM ALLOWABLE NON-STORMWATER DISCHARGES MUST BE DESIGNED TO HANDLE THE VOLUME OF THE NON-STORMWATER COMPONENT.

- 11.4. WASH DOWN OR WASTE DISCHARGE OF CONCRETE TRUCKS WILL NOT BE PERMITTED ON-SITE UNLESS PROPER SETTLEMENT AREAS HAVE BEEN PROVIDED IN ACCORDANCE WITH BOTH STATE AND FEDERAL REGULATIONS.
- 11.5. ARE ANY DISCHARGES ASSOCIATED WITH INDUSTRIAL (NON-CONSTRUCTION STORMWATER) ACTIVITY EXPECTED (3.5.1.h)?
- YES NO
- IF YES, SPECIFY THE LOCATION OF THE ACTIVITY AND ITS PERMIT NUMBER: _____

12. **SPILL PREVENTION, MANAGEMENT AND NOTIFICATION (3.5.5.5, 5.1)**
- 12.1. **SPILL PREVENTION (3.5.5.5)**
- CONTRACTORS BULK FUEL AND PETROLEUM PRODUCTS STORED ON-SITE OR ADJACENT TO THE R.O.W. IN ABOVE GROUND STORAGE TANKS WITH AGGREGATE STORAGE CAPACITY IN EXCESS OF 1,320 GALLONS SHALL HAVE SECONDARY CONTAINMENT.

THE CONTRACTOR SHALL BE RESPONSIBLE FOR PREPARING A SPILL PREVENTION CONTROL AND COUNTERMEASURE (SPCC) PLAN AS REQUIRED BY LAW AND BE SOLELY RESPONSIBLE FOR OBTAINING ANY NECESSARY LOCAL, STATE AND FEDERAL PERMITS. THE SPCC PLAN AND/OR PERMITS SHALL BE KEPT ON-SITE AND A COPY PROVIDED TO THE TDOT CONSTRUCTION SUPERVISOR.

- 12.2. MATERIAL MANAGEMENT
- 12.2.1. HOUSEKEEPING
- ONLY NEEDED PRODUCTS WILL BE STORED ON-SITE BY THE CONTRACTOR. EXCEPT FOR BULK MATERIALS THE CONTRACTOR WILL STORE ALL MATERIALS UNDER COVER AND IN APPROPRIATE CONTAINERS. PRODUCTS MUST BE STORED IN ORIGINAL CONTAINERS AND LABELED. MATERIAL MIXING WILL BE CONDUCTED IN ACCORDANCE WITH THE MANUFACTURER'S RECOMMENDATIONS. WHEN POSSIBLE, ALL PRODUCTS WILL BE USED COMPLETELY BEFORE PROPERLY DISPOSING OF THE CONTAINER OFF SITE. THE MANUFACTURER'S DIRECTIONS FOR DISPOSAL OF MATERIALS IN ORIGINAL CONTAINERS WILL BE FOLLOWED. THE CONTRACTOR'S SITE SUPERINTENDENT WILL INSPECT MATERIALS STORAGE AREAS REGULARLY TO ENSURE PROPER USE AND DISPOSAL. DUST GENERATED WILL BE CONTROLLED IN AN ENVIRONMENTALLY SAFE MANNER. VEGETATION AREAS NOT ESSENTIAL TO THE CONSTRUCTION PROJECT WILL BE PRESERVED AND MAINTAINED AS NOTED ON THE PLANS.

- 12.2.2. HAZARDOUS MATERIALS
- PRODUCTS TO BE KEPT IN ORIGINAL CONTAINERS UNLESS THE CONTAINER IS NOT RESEALABLE. ORIGINAL LABELS AND MATERIAL SAFETY DATA SHEETS WILL BE RETAINED IN A SAFE PLACE TO RELAY IMPROPER INFORMATION. IF SURPLUS PRODUCT MUST BE DISPOSED OF, MANUFACTURER'S LABEL DIRECTIONS FOR DISPOSAL WILL BE FOLLOWED. MAINTENANCE AND REPAIR OF ALL EQUIPMENT AND VEHICLES INVOLVING OIL CHANGES, HYDRAULIC SYSTEM DRAIN DOWN, DE-GREASING OPERATIONS, FUEL TANK DRAIN DOWN AND REMOVAL, AND OTHER ACTIVITIES WHICH MAY RESULT IN THE ACCIDENTAL RELEASE OF CONTAMINANTS WILL BE CONDUCTED ON AN IMPERVIOUS SURFACE AND UNDER COVER DURING WET WEATHER TO PREVENT THE RELEASE OF CONTAMINANTS ONTO THE GROUND. WHEEL WASH WATER WILL BE COLLECTED AND ALLOWED TO SETTLE OUT SUSPENDED SOLIDS PRIOR TO DISCHARGE. WHEEL WASH WATER WILL NOT BE DISCHARGED DIRECTLY INTO ANY STORMWATER SYSTEM OR STORMWATER TREATMENT SYSTEM. POTENTIAL PH-MODIFYING MATERIALS SUCH AS: BULK CEMENT, CEMENT, HIGH ALKALINEITY CONCRETE WASHINGS AND CURING WATERS, CONCRETE PUMPING, AND MIXER WASHOUT WATERS WILL BE COLLECTED ON SITE AND RECYCLED TO PREVENT CONTAMINATION OF STORMWATER RUNOFF.

- 12.3. PRODUCT SPECIFIC PRACTICES
- 12.3.1. PETROLEUM PRODUCTS: ALL ON-SITE VEHICLES WILL BE MONITORED FOR LEAKS AND RECEIVE REGULAR PREVENTIVE MAINTENANCE TO REDUCE THE CHANCE OF LEAKAGE. PETROLEUM PRODUCTS WILL BE STORED IN TIGHTLY SEALED CONTAINERS WHICH ARE CLEARLY LABELED.

- 12.3.2. FERTILIZERS: FERTILIZERS WILL BE APPLIED ONLY IN THE AMOUNTS SPECIFIED BY TDOT. ONCE APPLIED, FERTILIZERS WILL BE WORKED INTO THE SOIL TO LIMIT THE EXPOSURE TO STORMWATER. FERTILIZERS WILL BE STORED IN AN ENCLOSED AREA UNDER COVER. THE CONTENTS OF PARTIALLY USED FERTILIZER BAGS WILL BE TRANSFERRED TO SEALABLE CONTAINERS TO AVOID SPILLS.

- 12.3.3. PAINTS: ALL CONTAINERS WILL BE TIGHTLY SEALED AND STORED WHEN NOT REQUIRED FOR USE. THE EXCESS WILL BE DISPOSED ACCORDING TO THE MANUFACTURER'S INSTRUCTIONS AND APPLICABLE STATE AND LOCAL REGULATIONS.

- 12.3.4. CONCRETE TRUCKS: CONTRACTORS WILL PROVIDE DESIGNATED TRUCK WASHOUT AREAS ON THE SITE. THESE AREAS MUST BE SELF CONTAINED AND NOT CONNECTED TO ANY STORMWATER OUTLET OF THE SITE. UPON COMPLETION OF CONSTRUCTION WASHOUT AREAS WILL BE PROPERLY STABILIZED.

- 12.4. SPILL MANAGEMENT
- 12.4.1. IN ADDITION TO THE PREVIOUS HOUSEKEEPING AND MANAGEMENT PRACTICES, THE FOLLOWING PRACTICES WILL BE

FOLLOWED FOR SPILL PREVENTION AND CLEANUP IF NECESSARY.

- 12.4.2. FOR ALL HAZARDOUS MATERIALS STORED ON-SITE, THE MANUFACTURER'S RECOMMENDED METHODS FOR SPILL CLEAN UP WILL BE CLEARLY POSTED. SITE PERSONNEL WILL BE MADE AWARE OF THE PROCEDURES AND THE LOCATIONS OF THE INFORMATION AND CLEANUP SUPPLIES.
- 12.4.3. APPROPRIATE CLEANUP MATERIALS AND EQUIPMENT WILL BE MAINTAINED BY THE CONTRACTOR IN THE MATERIALS STORAGE AREA ON-SITE AND UNDER COVER. AS APPROPRIATE, EQUIPMENT AND MATERIALS MAY INCLUDE ITEMS SUCH AS BOOMS, DUST PANS, MOPS, RAGS, GLOVES, GOGGLES, KITTY LITTER, SAND, SAWDUST, AND PLASTIC AND METAL TRASH CONTAINERS SPECIFICALLY FOR CLEAN UP PURPOSES.
- 12.4.4. ALL SPILLS WILL BE CLEANED IMMEDIATELY AFTER DISCOVERY AND THE MATERIALS DISPOSED OF PROPERLY. THE SPILL AREA WILL BE KEPT WELL VENTILATED AND PERSONNEL WILL WEAR APPROPRIATE PROTECTIVE CLOTHING TO PREVENT INJURY FROM CONTACT WITH A HAZARDOUS SUBSTANCE.

- 12.4.5. THE CONTRACTOR'S RESPONSIBLE PARTY WILL BE THE SPILL PREVENTION AND CLEANUP COORDINATOR. THE CONTRACTOR IS RESPONSIBLE FOR ENSURING THAT THE SITE SUPERINTENDENT HAS HAD APPROPRIATE TRAINING FOR HAZARDOUS MATERIALS HANDLING, SPILL MANAGEMENT, AND CLEANUP.

- 12.4.6. IF SPILLS REPRESENT AN IMMINENT THREAT OF ESCAPING THE SITE AND ENTERING RECEIVING WATERS, PERSONNEL WILL RESPOND IMMEDIATELY TO CONTAIN THE LEAK AND NOTIFY THE SUPERINTENDENT AFTER THE SITUATION HAS BEEN STABILIZED.

- 12.4.7. IF AN OIL SHEEN IS OBSERVED ON SURFACE WATER (E.G. SETTLING PONDS, DETENTION Ponds, SWALES), ACTION WILL BE TAKEN IMMEDIATELY TO REMOVE THE MATERIAL CAUSING THE SHEEN. THE CONTRACTOR WILL USE APPROPRIATE MATERIALS TO CONTAIN AND ABSORB THE SPILL. THE SOURCE OF THE OIL SHEEN WILL ALSO BE IDENTIFIED AND REMOVED OR REPAIRED AS NECESSARY TO PREVENT FURTHER RELEASES.

- 12.4.8. IF A SPILL OCCURS THE CONTRACTOR'S SITE SUPERINTENDENT SHALL BE RESPONSIBLE FOR COMPLETING THE SPILL REPORTING FORM AND FOR REPORTING THE SPILL TO THE TDOT CONSTRUCTION SUPERVISOR AND/OR PROJECT ENGINEER. ALL SPILLS MUST BE REPORTED TO THE APPROPRIATE AGENCY, AND MEASURES SHALL BE TAKEN IMMEDIATELY TO PREVENT THE POLLUTION OF WATERS OF THE STATE(U.S.), INCLUDING GROUNDWATER, SHOULD A SPILL OCCUR.

- 12.4.9. APPROPRIATE CLEANUP MATERIALS AND EQUIPMENT SHALL BE MAINTAINED BY THE CONTRACTOR IN THE MATERIALS STORAGE AREA ON-SITE AND UNDER COVER. SPILL RESPONSE EQUIPMENT SHALL BE INSPECTED AND MAINTAINED BY THE CONTRACTOR AS NECESSARY TO REPLACE ANY MATERIALS USED IN SPILL RESPONSE ACTIVITIES.

- 12.5. SPILL NOTIFICATION (6.1)
- WHERE A RELEASE CONTAINING A HAZARDOUS SUBSTANCE IN AN AMOUNT EQUAL TO OR IN EXCESS OF A REPORTABLE QUANTITY ESTABLISHED UNDER EITHER 40 CFR 117 OR 40 CFR 302 OCCURS DURING A 24 HOUR PERIOD:

- 12.5.1. THE TDOT PROJECT SUPERVISOR IS RESPONSIBLE FOR NOTIFYING THE REGIONAL ENVIRONMENTAL COORDINATOR OR ASSISTANT REGIONAL ENVIRONMENTAL COORDINATOR AS SOON AS HE OR SHE HAS KNOWLEDGE OF THE DISCHARGE.

- 12.5.2. THE TDOT REGIONAL ENVIRONMENTAL COORDINATOR WILL NOTIFY THE LOCAL TDC ENVIRONMENTAL FIELD OFFICE AND ANY OTHER APPLICABLE REGULATORY AGENCIES WITHIN 24 HOURS OF THE SPILL.

- 12.5.3. A WRITTEN DESCRIPTION OF THE RELEASE, DATE OF RELEASE AND CIRCUMSTANCES LEADING TO THE RELEASE, WHAT ACTIONS WERE TAKEN TO MITIGATE EFFECTS OF THE RELEASE,

AND STEPS TAKEN TO MINIMIZE THE CHANCE OF FUTURE OCCURRENCES WILL BE SUBMITTED TO THE APPROPRIATE TDEC ENVIRONMENTAL FIELD OFFICE WITHIN 14 DAYS OF KNOWLEDGE OF THE RELEASE.

12.5.4 THE SWPPP MUST BE MODIFIED WITHIN 14 DAYS OF KNOWLEDGE OF THE RELEASE PROVIDING A DESCRIPTION OF THE RELEASE, CIRCUMSTANCES LEADING TO THE RELEASE, AND THE DATE OF RELEASE. THE SWPPP WILL BE REVISED AND MODIFIED AS NECESSARY TO IDENTIFY MEASURES TO PREVENT THE REOCCURRENCE OF SUCH RELEASES AND TO RESPOND TO SUCH RELEASES.

13. RECORD KEEPING

13.1. REQUIRED RECORDS
 TDOT OR THEIR DESIGNEE WILL MAINTAIN AT THE SITE THE FOLLOWING RECORDS OF CONSTRUCTION ACTIVITIES (3.5.3.1)(a) (6.2.1):
 • THE DATES WHEN MAJOR GRADING ACTIVITIES OCCUR
 • THE DATES WHEN CONSTRUCTION ACTIVITIES TEMPORARILY OR PERMANENTLY CEASE ON A PORTION OF THE SITE
 • THE DATES WHEN STABILIZATION MEASURES ARE INITIATED
 • RECORDS EPSC INSPECTION REPORTS AND CORRECTIVE MEASURES
 • RECORDS OF QUALITY ASSURANCE SITE ASSESSMENTS
 • COPY OF SITE EPSC INSPECTOR'S TDEC LEVEL 1 CERTIFICATION

13.2. RAINFALL MONITORING PLAN (3.5.3.1.c):

13.2.1. EQUIPMENT
 AT A MINIMUM, THE CONTRACTOR WILL INSTALL A FENCE POST TYPE RAIN GAUGE TO MEASURE RAINFALL. THE STANDARD FENCE POST RAIN GAUGE WILL BE A WEDGE-SHAPED GAUGE THAT MEASURES UP TO 6 INCHES OF RAINFALL. AN ENGLISH SCALE WILL BE PROVIDED ON ONE FACE, WITH A METRIC SCALE ON THE OTHER FACE. GRADUATION WILL BE PERMANENTLY MOLDED IN DURABLE WEATHER-RESISTANT PLASTIC. THE MINIMUM GRADUATION WILL BE 0.01 INCH (OR 0.1MM) AN ALUMINUM BRACKET WITH SCREWS MAY BE USED TO MOUNT THE GAUGE ON A WOODEN SUPPORT.

13.2.2. LOCATION
 THE RAIN GAUGE WILL BE LOCATED AT OR ALONG THE PROJECT SITE, AS DEFINED IN THE NOI OF THE NPDES PERMIT, IN AN OPEN AREA SUCH THAT THE MEASUREMENT WILL NOT BE INFLUENCED BY OUTSIDE FACTORS (I.E. OVERHANGS, GUTTER, TREES, ETC.) AT LEAST ONE RAIN GAUGE PER LINEAR MILE IS REQUIRED ALONG (AS MEASURED ALONG THE CENTERLINE OF THE PRIMARY ALIGNMENT) THE PROJECT WHERE CLEARING, GRUBBING, EXCAVATION, GRADING, CUTTING OR FILLING IS ACTIVELY PERFORMED, OR EXPOSED SOIL HAS NOT YET BEEN PERMANENTLY STABILIZED.

13.2.3. METHODS
 RAINFALL MONITORING WILL BE INITIATED PRIOR TO CLEARING, GRUBBING, EXCAVATION, GRADING, CUTTING, OR FILLING, EXCEPT AS SUCH MINIMAL CLEARING MAY BE NECESSARY TO INSTALL A RAIN GAUGE IN AN OPEN AREA. THE RAIN GAUGE WILL BE CHECKED FOR OPERATIONAL SOUNDNESS DAILY (DURING NORMAL BUSINESS HOURS) IN WET TIMES AND WEEKLY IN DRY TIMES. GAUGES WILL BE REPAIRED OR REPLACED ON THE SAME DAY IF FOUND TO BE NON-OPERATIONAL OR MISSING.

13.2.4. EACH RAIN GAUGE WILL BE READ (FOR DETAILED RECORDS OF RAINFALL) AND EMPLOYED AFTER EVERY RAIN EVENT OCCURRING ON THE PROJECT SITE AT APPROXIMATELY THE SAME TIME OF THE DAY (DURING NORMAL BUSINESS HOURS). DURING PERIODS OF DRY CONDITIONS, IT WILL NOT BE NECESSARY TO READ THE RAIN GAUGE EVERY DAY. IN LIEU OF THIS REQUIREMENT ON WEEKENDS AND ON STATE HOLIDAYS, THE RAIN GAUGES CAN BE EMPLOYED THE NEXT BUSINESS DAY AND A REFERENCE SITE USED FOR A RECORD OF DAILY AMOUNT OF PRECIPITATION FOR THOSE DAYS. A REFERENCE SITE IS THE DOCUMENTATION FROM THE CLOSEST GAUGE WITH PROXIMITY OF THE PROJECT FROM A RECOGNIZED SOURCE SUCH AS THE NOAA NATIONAL WEATHER SERVICE.

13.2.5. DETAILED RECORDS WILL BE RECORDED OF RAINFALL EVENTS INCLUDE DATES, AMOUNTS OF RAINFALL, AND THE APPROXIMATE DURATION (OR THE STARTING AND ENDING TIMES). THE RAINFALL RECORDS SHALL BE RECORDED ON THE TDOT RAINFALL RECORD SHEET AND SHALL BE MAINTAINED IN THE DOCUMENTATION AND PERMITS' BINDER.

13.2.6. IF, IN THE EVENT THAT THE RAINFALL EVENT IS STILL IN PROGRESS AT THE DAILY RECORDING TIME, THE GAUGE WILL BE EMPTIED AND THE RECORD WILL INDICATE THAT THE STORM EVENT WAS STILL IN PROGRESS.

13.2.7. RAIN GAUGE INFORMATION (DETAILED RECORDS), INCLUDING THE LOCATION OF THE NEAREST OUTFALL, WILL BE RECORDED ON THE EPSC INSPECTION REPORT FORMS AT THE TIME OF MEASUREMENT.

13.3. KEEPING PLANS CURRENT (6.4)
 TDOT OR THEIR DESIGNEE WILL MODIFY AND UPDATE THE SWPPP WHEN ANY OF THE FOLLOWING CONDITIONS APPLY:

- WHENEVER THERE IS A CHANGE IN THE SCOPE OF THE PROJECT THAT WOULD BE EXPECTED TO HAVE A SIGNIFICANT EFFECT ON THE DISCHARGE OF POLLUTANTS TO THE WATERS OF THE STATE AND WHICH HAS NOT OTHERWISE BEEN ADDRESSED IN THE SWPPP.
- WHENEVER INSPECTIONS OR INVESTIGATIONS BY SITE OPERATORS, LOCAL, STATE, OR FEDERAL OFFICIALS INDICATE THE SWPPP IS PROVING INEFFECTIVE IN ELIMINATING OR SIGNIFICANTLY MINIMIZING POLLUTANTS FROM CONSTRUCTION ACTIVITY SOURCES, OR IS OTHERWISE NOT ACHIEVING THE GENERAL OBJECTIVES OF CONTROLLING POLLUTANTS IN STORMWATER DISCHARGES ASSOCIATED WITH CONSTRUCTION.
- WHENEVER LOCAL, STATE, OR FEDERAL OFFICIALS DETERMINE THAT THE SWPPP IS INEFFECTIVE IN ELIMINATING OR SIGNIFICANTLY MINIMIZING POLLUTANT SOURCES, A COPY OF ANY CORRESPONDENCE TO THAT EFFECT MUST BE RETAINED IN THE SWPPP.
- WHEN ANY NEW OPERATOR AND/OR SUB-OPERATOR IS ASSIGNED OR RELIEVED OF THEIR RESPONSIBILITY TO IMPLEMENT A PORTION OF THE SWPPP.
- TO PREVENT A NEGATIVE IMPACT TO LEGALLY PROTECTED STATE OR FEDERALLY LISTED OR PROPOSED THREATENED OR ENDANGERED AQUATIC FAUNA.
- WHEN THERE IS A CHANGE IN CHEMICAL TREATMENT METHODS INCLUDING: USE OF DIFFERENT TREATMENT CHEMICALS, DIFFERENT DOSAGE OR APPLICATION RATES OR A DIFFERENT AREA OF APPLICATION NOT SPECIFIED ON THE EPSC PLANS.

ALL SWPPP REVISION(S) SHALL BE RECORDED WITHIN 7 DAYS BY THE PROJECT EPSC INSPECTOR.

13.4. WHEN A TMDL IS DEVELOPED FOR THE RECEIVING WATERS FOR A POLLUTANT OF CONCERN (SILTATION AND/OR HABITAT ALTERATION) CONSTRUCTION SHALL NOTIFY THE PERMITS SECTION FOR PROPER COORDINATION.

13.5. THE EPSC PLAN IS TO SERVE AS AN INITIAL GUIDE FOR SITE PERSONNEL AS THE CONSTRUCTION PROCESS DEVELOPS. IT MUST BE AMENDED, MODIFIED, AND UPDATED WHENEVER EPSC INSPECTIONS INDICATE, OR WHERE STATE OR FEDERAL REGULATORY OFFICIALS DETERMINE SWPPP MEASURES ARE PROVING INEFFECTIVE IN ELIMINATING OR SIGNIFICANTLY MINIMIZING POLLUTANT SOURCES OR ARE OTHERWISE NOT ACHIEVING THE GENERAL OBJECTIVES OF CONTROLLING POLLUTANTS IN STORMWATER DISCHARGES ASSOCIATED WITH THE CONSTRUCTION ACTIVITY. THE STAGES DEPICED IN THE EPSC PLANS MAY NOT COINCIDE WITH THE ACTUAL STAGES OF CONSTRUCTION ESTABLISHED BY THE CONTRACTOR DURING CONSTRUCTION. THIS MODIFICATIONS WILL BE REQUIRED TO ENSURE THE EPSC PLAN IS MAINTAINED TO DEPICT CURRENT SITE CONDITIONS. IT SHOULD BE MAINTAINED SUCH THAT IT WILL ALWAYS REFLECT THE MEASURES THAT ARE INSTALLED DURING THE VARIOUS STAGES OF CONSTRUCTION. IT IS IMPRACTICAL TO DETERMINE ALL THE INTERMEDIATE PHASES OF CONSTRUCTION THAT WILL OCCUR. THEREFORE, THE SWPPP WILL HAVE TO BE UPDATED THROUGHOUT THE LIFE OF THE CONSTRUCTION PROJECT. THE ENVIRONMENTAL DIVISION MAY BE CONTACTED FOR GUIDANCE ON SPECIFIC SWPPP NEEDS. A COPY OF ANY REGULATORY CORRESPONDENCE REGARDING THE EFFECTIVENESS OF THE SWPPP OR EPSC CONTROLS SHALL BE RETAINED IN THE SWPPP.

13.6. MAKING PLANS ACCESSIBLE

13.6.1. TDOT WILL RETAIN A COPY OF THIS SWPPP (INCLUDING A COPY OF THE "DOCUMENTATION AND PERMITS" BINDER AT THE CONSTRUCTION SITE (OR OTHER LOCATION ACCESSIBLE TO TDEC AND THE PUBLIC) FROM THE DATE CONSTRUCTION COMMENCES TO THE DATE OF FINAL STABILIZATION. TDOT WILL HAVE A COPY OF THE SWPPP AVAILABLE AT THE LOCATION WHERE WORK IS OCCURRING ON-SITE FOR THE USE OF OPERATORS AND THOSE IDENTIFIED AS HAVING RESPONSIBILITIES UNDER THE SWPPP WHENEVER THEY ARE ON THE CONSTRUCTION SITE (6.2).

13.6.2. PRIOR TO THE INITIATION OF LAND DISTURBING ACTIVITIES AND UNTIL THE SITE HAS MET THE FINAL STABILIZATION CRITERIA, TDOT OR THEIR DESIGNEE WILL POST A NOTICE NEAR THE MAIN ENTRANCE OF THE CONSTRUCTION SITE WITH THE FOLLOWING INFORMATION (3.3.3) (6.2.1):

- A COPY OF THE NOTICE OF COVERAGE (NOO) WITH THE NPDES PERMIT NUMBER FOR THE PROJECT;
- THE INDIVIDUAL NAME, COMPANY NAME, E-MAIL ADDRESS (IF APPLICABLE) AND TELEPHONE NUMBER OF THE LOCAL PROJECT SITE OWNER AND OPERATOR CONTACT;
- A BRIEF DESCRIPTION OF THE PROJECT; AND
- THE LOCATION OF THE SWPPP.

13.6.3. ALL INFORMATION DESCRIBED IN SECTION 10.3.2 MUST BE MAINTAINED IN LEGIBLE CONDITION. IF POSTING THIS INFORMATION NEAR A MAIN ENTRANCE IS INFEASIBLE DUE TO SAFETY CONCERNS, THE NOTICE SHALL BE POSTED IN A LOCAL BUILDING. THE NOTICE MUST BE PLACED IN A PUBLICLY ACCESSIBLE LOCATION WHERE CONSTRUCTION IS ACTIVELY UNDERWAY AND MOVED AS NECESSARY.

13.7. NOTICE OF TERMINATION (6.0)

13.7.1. WHEN ALL STORMWATER DISCHARGES FROM CONSTRUCTION ACTIVITIES THAT ARE AUTHORIZED BY THE PERMIT ARE ELIMINATED BY FINAL STABILIZATION, THE TDOT REGIONAL ENGINEER WILL SUBMIT A NOTICE OF TERMINATION (NOT) THAT IS SIGNED IN ACCORDANCE WITH THE PERMIT TO THE TDEC CENTRAL OFFICE IN NASHVILLE, TN.

13.7.2. FOR THE PURPOSES OF THE CERTIFICATION REQUIRED BY THE NOT, THE ELIMINATION OF STORMWATER DISCHARGES ASSOCIATED WITH THE CONSTRUCTION ACTIVITY MEANS THE FOLLOWING:

- ALL EARTH-DISTURBING ACTIVITIES ON THE SITE ARE COMPLETED AND ALL DISTURBED SOILS AT THE PORTION OF THE CONSTRUCTION SITE WHERE THE OPERATOR HAD CONTROL HAVE BEEN FINALLY STABILIZED; AND
- ALL CONSTRUCTION MATERIALS, WASTE AND WASTE HANDLING DEVICES, AND ALL EQUIPMENT, AND VEHICLES THAT WERE USED DURING CONSTRUCTION HAVE BEEN REMOVED AND PROPERLY DISPOSED;
- ALL STORMWATER CONTROLS THAT WERE INSTALLED AND MAINTAINED DURING CONSTRUCTION, EXCEPT THOSE THAT ARE INTENDED FOR LONG-TERM USE FOLLOWING TERMINATION OF PERMIT COVERAGE, HAVE BEEN REMOVED; AND
- ALL POTENTIAL POLLUTANTS AND POLLUTANT GENERATING ACTIVITIES ASSOCIATED WITH CONSTRUCTION HAVE BEEN REMOVED; AND
- THE PERMITTEE HAS IDENTIFIED WHO IS RESPONSIBLE FOR ONGOING MAINTENANCE OF ANY STORMWATER CONTROLS LEFT ON THE SITE FOR LONG-TERM USE FOLLOWING TERMINATION OF PERMIT COVERAGE; AND
- TEMPORARY EPSC MEASURES HAVE BEEN OR WILL BE REMOVED AT AN APPROPRIATE TIME TO ENSURE FINAL STABILIZATION IS MAINTAINED; AND
- ALL STORMWATER DISCHARGES ASSOCIATED WITH CONSTRUCTION ACTIVITIES FROM THE IDENTIFIED SITE THAT ARE AUTHORIZED BY A NPDES GENERAL PERMIT HAVE BEEN ELIMINATED FROM THE PORTION OF THE CONSTRUCTION SITE WHERE THE OPERATOR HAD CONTROL.

13.8. RETENTION OF RECORDS (6.2)

TDOT WILL RETAIN COPIES OF THE SWPPP. ALL REPORTS REQUIRED BY THE PERMIT, AND THE DATA USED TO COMPLETE THEM, THE NOTICE OF INTENT FOR THE PROJECT FOR A PERIOD OF AT LEAST THREE (3) YEARS FROM THE DATE THE NOT WAS FILED.

TYPE	YEAR	PROJECT NO.	SHEET NO.
CONST.	2016	13017-4225-04	C-6
P.E.	2016	13017-4223-04	

STATE OF TENNESSEE
 DEPARTMENT OF TRANSPORTATION

STORMWATER
 POLLUTION
 PREVENTION
 PLAN

TYPE	YEAR	PROJECT NO.	SHEET NO.
CONST.	2016	73017-4225-04	1A

S.R. 95
73017-4225-04 (CONST.)
ROANE CO.

INDEX

SHEET NAME	SHEET NO.
TITLE SHEET	1
INDEX AND STANDARD DRAWINGS.....	1A
PROJECT COMMITMENTS	1B
ESSENTIAL ROADWAY QUANTITIES	2
TYPICAL SECTIONS & PAVEMENT SCHEDULE	2A
GENERAL NOTES	2B-2C
SPECIAL NOTES AND SCOPE OF WORK.....	2D
TABULATED QUANTITIES	2E
R.O.W. ACQUISITION TABLE, UTILITY NOTES, & UTILITY OWNERS.....	3
PRESENT LAYOUT.....	4
PROPOSED LAYOUT	4A
PROFILE	4B
BOX BRIDGE CROSS SECTION	5
EROSION PREVENTION AND SEDIMENT CONTROL NOTES	5
EROSION PREVENTION AND SEDIMENT CONTROL PLAN STAGE 1.....	7
EROSION PREVENTION AND SEDIMENT CONTROL PLAN STAGE 2	8
TRAFFIC CONTROL PLAN	9
PAVEMENT EDGE DROP-OFF TRAFFIC CONTROL NOTES	9A
SOILS SHEETS.....	10, 10A, 10B
ROADWAY CROSS SECTIONS	11-14
UTILITY INDEX.....	U-1
STORM WATER POLLUTION PREVENTION PLAN (SWPPP) INDEX.....	S-1

STANDARD BRIDGE DRAWINGS

DWG. NO	REV.	DESCRIPTION	DWG. NO	REV.	DESCRIPTION
BRIDGE APPURTENANCES ENGLISH (LRFD BOX CULVERTS)					
STD-10-1	04-08-05	MISCELLANEOUS ABUTMENT AND DRAINAGE DETAILS	S-PL-3		SAFETY PLAN: MINIMUM INSTALLATION AT BRIDGE ENDS
STD-17-1		INDEX OF DRAWINGS	S-PL-6	02-08-16	SAFETY PLAN: SAFETY HARDWARE PLACEMENT
STD-17-2		TERMINOLOGY	S-GR31-1	12-01-14	W-B5M GUARDRAIL
STD-17-3		GENERAL NOTES	S-GRS-2		SPECIAL CASE: GUARDRAIL ATTACHMENT TO CONCRETE DECKS
STD-17-4		DESIGN SECTION LIMITS	S-GRT-2	11-03-14	TYPE 38 GUARDRAIL TERMINAL
STD-17-5		TYPICAL SECTIONS AND DETAILS	S-GRT-2P		EARTH PAD FOR TYPE 38 TERMINAL
STD-17-6		TYPICAL ELEVATIONS	TRAFFIC CONTROL DESIGN		
STD-17-7		CURB, RAIL & EDGE BEAM DETAILS - SKEW NOT LESS THAN 45 DEG	T-M-1	07-24-14	DETAILS OF PAVEMENT MARKINGS FOR CONVENTIONAL ROADS AND MARKING ABBREVIATIONS
STD-17-9		INTERIOR WALL END TREATMENTS	T-M-2	07-24-14	DETAILS OF PAVEMENT MARKINGS FOR CONVENTIONAL ROADS
STD-17-10		TYPICAL WINGWALL END TREATMENTS	T-M-15A	01-30-15	ASP-HALT SHOULDER RUMBLE STRIP INSTALLATION DETAILS FOR NON-ACCESS CONTROLLED ROUTES
STD-17-11		WINGWALL DIMENSIONS AND QUANTITIES	T-PBR-1	05-30-09	INTERCONNECTED PORTABLE BARRIER RAIL
STD-17-15		WINGWALL & SPECIAL RETAINING WALL DESIGN SECTIONS	T-PBR-2	11-01-11	DETAIL FOR VERTICAL PANELS AND FLEXIBLE DELINEATORS
STD-17-16		WINGWALL DESIGN SECTION	T-WZ-10	04-02-12	ADVANCE ROAD WORK SIGNING ON HIGHWAYS AND FREEWAYS
STD-17-17	06-01-11	BACKFILL AND DRAINAGE DETAILS	EROSION PREVENTION AND SEDIMENT CONTROL		
STD-17-18		BACKFILL DETAILS	EC-STR-2	08-01-12	SEDIMENT FILTER BAG
STD-17-25		STAGE CONSTRUCTION JOINT DETAIL (FILL ABOVE TOP OF SLAB NOT GREATER THAN 3'-6")	EC-STR-3B	08-01-12	SILT FENCE
STD-17-26		EXTENSION DETAILS	EC-STR-3C	08-01-12	SILT FENCE WITH WIRE BACKING
STD-17-28		END SECTION DETAILS	EC-STR-3E	04-01-08	SILT FENCE FABRIC LINING DETAILS
STD-17-75		BOX BRIDGE, 2 BARRELS AT 10'; CLEAR HTS. 7' - 10', 0' - 90" FILL	EC-STR-6A	08-01-12	ENHANCED ROCK CHECK DAM
			EC-STR-25	08-01-12	TEMPORARY CULVERT CROSSING, CONSTRUCTION EXIT, CONSTRUCTION FORD
			EC-STR-30A	01-01-10	INSTREAM DIVERSION (WITH TRAFFIC)
			EC-STR-34	08-01-12	EROSION CONTROL BLANKET FOR SLOPE INSTALLATION
			EC-STR-37	05-10-14	SEDIMENT TUBE

STANDARD ROADWAY DRAWINGS

DWG. NO	REV.	DESCRIPTION
ROADWAY DESIGN STANDARDS		
RD-A-1	12-18-99	STANDARD ABBREVIATIONS
RD-L-1	10-26-94	STANDARD LEGEND
RD-L-2	09-05-01	STANDARD LEGEND FOR UTILITY INSTALLATIONS
RD-L-5	05-01-08	STANDARD LEGEND FOR EROSION PREVENTION AND SEDIMENT CONTROL
RD-L-6	03-30-10	STANDARD LEGEND FOR EROSION PREVENTION AND SEDIMENT CONTROL
RD-L-7	05-24-12	STANDARD LEGEND FOR EROSION PREVENTION AND SEDIMENT CONTROL
RD01-S-11	04-04-03	DESIGN AND CONSTRUCTION DETAILS FOR ROADSIDE SLOPE DEVELOPMENT
RD01-S-11A	10-15-02	ROADSIDE DITCH DETAILS FOR DESIGN AND CONSTRUCTION
RD01-SE-3	10-15-02	RURAL SUPERELEVATION DETAILS
RD01-TS-3	10-15-02	DESIGN STANDARD FOR 2-LANE ARTERIAL HIGHWAYS

SAFETY DEVICES AND FENCES		
S-CZ-1		CLEAR ZONE CRITERIA
S-PL-1		SAFETY PLAN AT ROADSIDE HAZARDS


UNOFFICIAL

SET

NOT FOR

BIDDING

SEALED BY



STATE OF TENNESSEE

DEPARTMENT OF TRANSPORTATION

INDEX

AND

STANDARD

DRAWINGS

TYPE	YEAR	PROJECT NO.	SHEET NO.
CONST.	2016	73017-4225-04	1B

S.R. 95
73017-4225-04 (CONST.)

ROANE CO.

PROJECT COMMITMENTS

COMMITMENT ID	SOURCE DIVISION	DESCRIPTION	STA. / LOCATION
EDHZ001	ENVIRONMENTAL (HAZARDOUS MATERIALS)	AN ABREXIOUS (UN)TRAINING MATERIAL (ULM) SURVEY WAS CONDUCTED UPON BRIDGE NO. 73SR0950001, SR-95 OVER BEAR CREEK, LM 4.19 (73-SR095-4.19). NO ACM WAS DETECTED. NO SPECIAL ACCOMMODATIONS FOR DEMOLITION AND WASTE DISPOSAL ARE ANTICIPATED FOR THESE STRUCTURES AND THE MATERIAL CAN BE DEPOSITED IN A C&D LANDFILL PRIOR TO THE DEMOLITION OR REHABILITATION OF ANY STRUCTURE (BRIDGE OR BUILDING). THE CONTRACTOR IS REQUIRED TO SUBMIT THE NATIONAL EMISSION STANDARDS FOR HAZARDOUS AIR POLLUTANTS STANDARD 10-DAY NOTICE OF DEMOLITION TO THE TDEC DIVISION OF AIR POLLUTION CONTROL (STANDARD SPECIFICATIONS FOR ROAD AND BRIDGE CONSTRUCTION (JANUARY 1, 2015) SECTIONS 107.06 D AND 202.03).	BRIDGE NO. 73SR0950001, SR-95 OVER BEAR CREEK, LM 4.19 (73-SR095-4.19)
EDHZ002	ENVIRONMENTAL (HAZARDOUS MATERIALS)	BEAR CREEK IS LISTED BY TDEC FOR CHEMICAL CONTAMINANTS (NINJA IN THE FUM NPL SITES). ASSUMING THIS MEANS THE WATER ONLY SINCE SEDIMENTS ARE NOT LISTED, IF WORK IN THE STREAM IS REQUIRED, 100% EMPLOYEES MUST USE THE SITE HEALTH AND SAFETY PLAN DEVELOPED FOR THIS SITE. CONTRACTORS MUST ENSURE THEIR EMPLOYEES HAVE A SITE HEALTH AND SAFETY PLAN FOR THIS SITE.	BEAR CREEK
EDEC001	ENVIRONMENTAL (ECOLOGY)	THE TENNESSEE DACE (CHROSOMUS TENNESSENSIS) HAS BEEN RECORDED IN BEAR CREEK AND SEVERAL TRIBUTARY STREAMS IN THE PROJECT AREA. TO AVOID ADVERSE IMPACTS TO THIS SPECIES, TNMA HAS REQUESTED THAT SWEEPS FOR THIS SPECIES BE CONDUCTED PRIOR TO ANY IN-STREAM WORK AND ANY INDIVIDUALS COLLECTED BE RELOCATED OUTSIDE THE PROJECT IMPACT AREA.	BEAR CREEK AND SEVERAL TRIBUTARY STREAMS IN THE PROJECT AREA

**UNOFFICIAL
SET
NOT FOR
BIDDING**

SEALED BY



STATE OF TENNESSEE
DEPARTMENT OF TRANSPORTATION

**PROJECT
COMMITMENTS**

TYPE	YEAR	PROJECT NO.	SHEET NO.
CONST.	2016	73017-4225-04	28

R. 86
31017-4225-04 (CONST.)

ROANE CO.

GENERAL NOTES

GRADING

- (1) ANY AREA THAT IS DISTURBED OUTSIDE LIMITS OF CONSTRUCTION DURING THE LIFE OF THIS PROJECT SHALL BE REPAIRED BY THE CONTRACTOR AT HIS EXPENSE.
- (2) CERTIFICATION FOR ALL BORROW PITS MUST BE OBTAINED IN ACCORDANCE WITH SUBSECTION 107.06 OF THE STANDARD SPECIFICATIONS.
- (3) THE CONTRACTOR SHALL NOT DISPOSE OF ANY MATERIAL EITHER ON OR OFF STATE-OWNED R.O.W. IN A REGULATORY FLOOD WAY AS DEFINED BY THE FEDERAL EMERGENCY MANAGEMENT AGENCY WITHOUT APPROVAL BY SAME. ALL MATERIAL SHALL BE DISPOSED OF IN UPLAND (NON-WETLAND) AREAS AND ABOVE ORDINARY HIGH WATER OF ANY ADJACENT WATERCOURSE. THIS DOES NOT ELIMINATE THE NEED TO OBTAIN ANY OTHER LICENSES OR PERMITS THAT MAY BE REQUIRED BY ANY OTHER FEDERAL, STATE OR LOCAL AGENCY.

SEEDING AND SODDING

- (4) ITEM NO. 801-02, SEEDING (WITHOUT MULCH) AND EROSION CONTROL, PERMITS SHALL BE OBTAINED AT LOCATIONS SHOWN ON THE PLANS AS WELL AS LOCATIONS DIRECTED BY THE ENGINEER.

GUARDRAIL

- (5) THE PROPOSED GUARDRAIL, INCLUDING ANY ANCHOR SYSTEM, SHALL BE INSTALLED QUICKLY TO MINIMIZE TRAFFIC EXPOSURE TO ANY HAZARD. NO PAYMENT WILL BE MADE FOR A SECTION OF PROPOSED GUARDRAIL, INCLUDING ANCHORS, UNTIL IT IS COMPLETE IN PLACE.

DRAINAGE

- (6) THE CONTRACTOR SHALL SHAPE DITCHES TO THE SPECIFIED DESIGN. THIS WORK WILL NOT BE MEASURED AND PAID FOR DIRECTLY, BUT THE COSTS WILL BE INCLUDED IN THE COSTS OF OTHER ITEMS.
- (7) CULVERT EXCAVATION FOR CONCRETE BOX BRIDGE EXTENSIONS WILL NOT BE MEASURED AND PAID FOR DIRECTLY, BUT THE COST WILL BE INCLUDED IN THE COSTS OF OTHER ITEMS.
- (8) THE CUTTING OF INLET AND OUTLET DITCHES WHERE SHOWN ON PLANS OR AS DIRECTED BY THE ENGINEER WILL BE MEASURED AND PAID FOR AS ITEM NO. 203-30.01 ROADWAY APPROACHES.
- (9) DURING CONSTRUCTION OF DRAINAGE STRUCTURES ALL COST ASSOCIATED WITH MAINTAINING THE FLOW OF WATER AND TRAFFIC, AT THESE STRUCTURES, DURING THE PHASED CONSTRUCTION OF THIS PROJECT ARE TO BE INCLUDED IN THE UNIT PRICE OF THE DRAINAGE STRUCTURES AND TRAFFIC CONTROL ITEMS.

MISCELLANEOUS

- (10) THE CONTRACTOR SHALL BE REQUIRED TO REMOVE AND RESET MAILBOXES WHERE AND AS DIRECTED BY THE ENGINEER.
- (11) NOTHING IN THE GENERAL NOTES OR SPECIAL PROVISIONS SHALL RELIEVE THE CONTRACTOR FROM HIS RESPONSIBILITIES TOWARD THE SAFETY AND CONVENIENCE OF THE GENERAL PUBLIC AND THE RESIDENTS ALONG THE PROPOSED CONSTRUCTION AREA.

PAVEMENT MARKINGS

- (12) TEMPORARY PAVEMENT LANE MARKINGS ON NEW ENHANCED FLATLINE PAVEMENT SHALL BE REFLECTIVE TAPE OR REFLECTORIZED PAINT INSTALLED TO PERMANENT STANDARDS AT THE END OF EACH DAY'S WORK. SHORT, UNMARKED SECTIONS SHALL NOT BE ALLOWED. THESE MARKINGS WILL BE MEASURED AND PAID FOR UNDER ITEM NO. 716-13.01, SPRAY THERMO PAVMT MKRNG (60 MIL) (4 IN LINE).
- (13) PERMANENT PAVEMENT LANE MARKINGS SHALL BE 6" ENHANCED FLATLINE THERMOPLASTIC INSTALLED TO PERMANENT STANDARDS AT THE END OF EACH DAY'S WORK. SHORT, UNMARKED SECTIONS SHALL NOT BE ALLOWED. PAVEMENT MARKINGS WILL BE MEASURED AND PAID FOR UNDER ITEM NO. 716-12.02, ENHANCED FLATLINE THERMO PAVMT MKRNG (80 MIL), L.M. THE CONTRACTOR SHALL HAVE THE OPTION OF USING REFLECTORIZED PAINT INSTALLED TO PERMANENT STANDARDS AT THE END OF EACH DAY'S WORK AND THEN INSTALLING THE PERMANENT MARKINGS AFTER THE PAVING OPERATION IS COMPLETED. TEMPORARY MARKINGS FOR THE FINAL SURFACE WILL NOT BE MEASURED AND PAID FOR DIRECTLY, BUT THE COSTS ARE TO BE INCLUDED IN THE PRICE BID FOR THE PERMANENT MARKINGS.

DETOURS, LANE SHIFTS AND MEDIAN CROSS-OVERS

- (14) THE PAVEMENT MARKING ON THE LANE SHIFT FOR CENTERLINE, EDGE LINES AND LANE LINES WILL BE INSTALLED AND MAINTAINED TO THE SAME STANDARDS FOR PERMANENT MARKINGS ON THE MAIN ROADWAY. THESE MARKINGS SHALL BE IN PLACE PRIOR TO ALLOWING TRAFFIC INTO THE PAVEMENT. THERMO PAVEMENT MARKINGS WILL BE MEASURED AND PAID FOR UNDER ITEM NO. 716-13.01, SPRAY THERMOPLASTIC PAVEMENT MARKING (60 MIL) (4 IN LINE).

PAVING

- (15) THE CONTRACTOR SHALL ATTACH A DEVICE TO THE SCREED OF THE PAVER SUCH THAT MATERIAL IS CONFINED AT THE END GATE AND EXTRUDES THE ASPHALT MATERIAL IN SUCH A WAY THAT RESULTS IN A CONSOLIDATED WEDGE SHAPE PAVEMENT EDGE OF APPROXIMATELY 25 TO 30 DEGREES AS IT LEAVES THE PAVER (MEASURED FROM A LINE PARALLEL TO THE PAVEMENT SURFACE). IT FORTH SHALL MEET THE REQUIREMENTS THAT ARE CURRENTLY SET FORTH IN SPECIAL PROVISION 407SE.

CONSTRUCTION WORK ZONE & TRAFFIC CONTROL

- (16) ADVANCED WARNING SIGNS SHALL NOT BE DISPLAYED MORE THAN FORTY-EIGHT (48) HOURS BEFORE PHYSICAL CONSTRUCTION BEGINS. SIGNS MAY BE ERECTED UP TO ONE WEEK BEFORE NEEDED. IF THE SIGN FACE IS FULLY COVERED.
- (17) IF THE CONTRACTOR MOVES OFF THE PROJECT, HE SHALL COVER OR REMOVE ALL UNNEEDED SIGNS AS DIRECTED BY THE ENGINEER. COSTS OF REMOVAL, COVERING, AND REINSTALLING SIGNS SHALL NOT BE MEASURED AND PAID FOR SEPARATELY, BUT ALL COSTS SHALL BE INCLUDED IN THE ORIGINAL UNIT PRICE BID FOR ITEM NO. 712-06, SIGNS (CONSTRUCTION) PER SQUARE FOOT.
- (18) A LONG TERM BUT SPORADIC USE WARNING SIGN, SUCH AS A FLAGGER SIGN, MAY REMAIN IN PLACE WHEN NOT REQUIRED PROVIDED THE SIGN FACE IS FULLY COVERED.
- (19) TRAFFIC CONTROL DEVICES SHALL NOT BE DISPLAYED OR ERECTED UNLESS RELATED CONDITIONS ARE PRESENT NECESSITATING WARNING.
- (20) USE OF BARRICADES, PORTABLE BARRIER RAILS, VERTICAL PANELS, AND DRUMS SHALL BE LIMITED TO THE IMMEDIATE AREAS OF CONSTRUCTION WHERE A HAZARD IS PRESENT. THESE DEVICES SHALL NOT BE STORED ALONG THE ROADWAY WITHIN THIRTY (30) FEET OF THE EDGE OF THE TRAVELED WAY BEFORE OR AFTER USE UNLESS PROTECTED BY GUARDRAIL, BARRIER RAIL, AND/OR PORTABLE BARRIERS OR OTHER PURPOSES FOR ROADWAYS WITH CURRENT ADTS LESS THAN 1500 AND DESIGN SPEEDS OF LESS THAN 60 MPH. THIS DISTANCE SHALL INCREASE TO FORTY-FIVE (45) FEET FOR ROADWAYS WITH CURRENT ADTS OF 1500 OR GREATER AND DESIGN SPEED OF 60 MPH OR GREATER OR ON THE OUTSIDE OF A HORIZONTAL CURVE. THESE DEVICES SHALL BE REMOVED FROM THE CONSTRUCTION WORK ZONE WHEN THE ENGINEER DETERMINES THEY ARE NO LONGER NEEDED. WHERE THERE IS INSUFFICIENT RIGHT-OF-WAY TO PROVIDE OR THIS REQUIRED SETBACK, THE CONTRACTOR SHALL DETERMINE THE ALTERNATE LOCATIONS AND REQUEST THE ENGINEER'S APPROVAL TO USE THEM.
- (21) THE CONTRACTOR SHALL NOT BE PERMITTED TO PARK ANY VEHICLES OR CONSTRUCTION EQUIPMENT DURING PERIODS OF INACTIVITY, WITHIN THIRTY (30) FEET OF THE EDGE OF PAVEMENT WHEN THE LANE IS OPEN TO TRAFFIC UNLESS PROTECTED BY GUARDRAIL, BARRIER RAIL, AND/OR PORTABLE BARRIERS INSTALLED FOR OTHER PURPOSES FOR ROADWAYS WITH CURRENT ADTS LESS THAN 1500 AND DESIGN SPEED OF LESS THAN 60 MPH. THIS DISTANCE SHALL BE INCREASED TO FORTY-FIVE (45) FEET FOR ROADWAYS WITH CURRENT ADTS OF 1500 OR GREATER AND DESIGN SPEED OF 60 MPH OR GREATER OR ON THE OUTSIDE OF A HORIZONTAL CURVE. PRIVATELY OWNED VEHICLES SHALL NOT BE ALLOWED TO PARK WITHIN THIRTY (30) FEET OF AN OPEN TRAFFIC LANE AT ANY TIME UNLESS PROTECTED AS DESCRIBED ABOVE FOR ROADWAYS WITH CURRENT ADTS LESS THAN 1500 AND DESIGN SPEED OF LESS THAN 60 MPH. THIS DISTANCE SHALL BE INCREASED TO FORTY-FIVE (45) FEET FOR ROADWAYS WITH CURRENT ADTS OF 1500 OR GREATER AND DESIGN SPEED OF 60 MPH OR GREATER OR ON THE OUTSIDE OF A HORIZONTAL CURVE. WHERE THERE IS INSUFFICIENT RIGHT-OF-WAY TO PROVIDE FOR THIS REQUIRED SETBACK, THE CONTRACTOR SHALL DETERMINE THE ALTERNATE LOCATIONS AND REQUEST THE ENGINEER'S APPROVAL TO USE THEM.
- (22) ALL DETOUR AND CONSTRUCTION SIGNING SHALL BE IN STRICT ACCORDANCE WITH THE MANUAL ON UNIFORM TRAFFIC CONTROL DEVICES.

EROSION PREVENTION AND SEDIMENT CONTROL

NATURAL RESOURCES

- (1) SOIL MATERIALS MUST BE PREVENTED FROM ENTERING WATERS OF THE STATE'S. EPCMS MEASURES TO PROTECT NATURAL RESOURCES AND WATER QUALITY SHALL REMAIN IN PLACE THROUGHOUT THE CONSTRUCTION PERIOD. APPROPRIATE EPCMS MEASURES MUST BE INSTALLED ALONG THE BASE OF ALL FILLS AND CUTS, ON THE DOWNHILL SIDE OF STOCKPILED SOIL, AND ALONG NATURAL RESOURCES IN CLEARED AREAS TO PREVENT SEDIMENT MIGRATION INTO STREAMS, WETLANDS OR OTHER NATURAL FEATURES IN ACCORDANCE WITH TDOT STANDARDS. EPCMS MEASURES SHALL BE INSTALLED ON THE CONTOUR, EXTENDED AND S'KAWED, AND EXTEND THE WIDTH OF THE AREA TO BE CLEARED.
- (2) NEW CHANNEL CONSTRUCTION SHALL BE COMPLETED IN THE DRY AND STABILIZED FOR AT LEAST 72 HOURS PRIOR TO DIVERTING WATER FROM THE EXISTING AND/OR TEMPORARY CHANNEL.
- (3) INSTREAM EPCMS DEVICES REQUIRE THE TDOCT ENVIRONMENTAL DIVISION, PERMITS SECTION REVIEW AND MUST BE PROCESSED BY THE PERMITS SECTION TO OBTAIN WATER QUALITY PERMITS.
- (4) THE OPERATION OF EQUIPMENT IN WATERS OF THE STATE'S, INCLUDING WETLANDS AND EPHEMERAL, INTERMITTENT, AND PERENNIAL STREAMS, SHALL BE ONLY AS DEPICTED ON THE CONSTRUCTION PLANS AND/OR AS SO SPECIFIED IN THE WATER QUALITY PERMITS, IF APPLICABLE. ANY DISCREPANCIES BETWEEN PERMITS AND PERMITS SHALL BE BROUGHT TO THE ATTENTION OF THE TDOCT RESPONSIBLE PARTY AS SOON AS POSSIBLE. ADDITIONAL PERMITS REQUIRED BY THE CONTRACTOR'S METHOD OF OPERATION SHALL BE THE RESPONSIBILITY OF THE CONTRACTOR TO OBTAIN AFTER RECEIVING THE APPROVAL OF THE TDOCT ENVIRONMENTAL DIVISION, PERMITS SECTION.
- (5) THE WIDTH OF THE FILL ASSOCIATED WITH TEMPORARY CROSSINGS SHALL BE LIMITED TO THE MINIMUM NECESSARY FOR THE ACTUAL CROSSING, NOT TO EXCEED THE WIDTH SPECIFIED IN THE STANDARD DRAWING.
- (6) STREAM BEDS SHALL NOT BE USED AS TRANSPORTATION ROUTES FOR CONSTRUCTION EQUIPMENT. TEMPORARY CULVERT CROSSINGS SHALL BE LIMITED TO ONE POINT PER STREAM AND EPCMS MEASURES SHALL BE USED WHERE THE STREAM BANKS ARE DISTURBED. WHERE THE STREAMBED IS NOT COMPOSED OF BEDROCK, A PAD OF CLEAN ROCK SHALL BE USED AT THE CROSSING POINT AND CULVERTED TO PREVENT THE IMPOUNDMENT OF WATER FLOW. CLEAN ROCK IS ROCK OF VARIOUS UNIT SIZE AND DEPENDS UPON AGRICULTURE, WHICH CONTAINS NO FERTILIZERS, OR OTHER WASTES OR CONTAMINANTS. OTHER MATERIALS USABLE FOR ALL TEMPORARY FILLS SHALL BE COMPLETELY REMOVED IN THEIR ENTIRETY AFTER THE WORK IS COMPLETED. ALL AFFECTED AREAS RETURNED TO PREEXISTING ELEVATIONS. ALL TEMPORARY CROSSINGS SHALL BE CONSTRUCTED IN ACCORDANCE WITH STD. DWG. EC-STR-25 UNLESS SPECIFICALLY ADDRESSED IN THE EPCMS PLANS. ALTERNATIVELY, PLACING A TEMPORARY BRIDGE (E.G. BAILEY BRIDGE OR EQUIVALENT, TIMBERS, ETC.) FROM TOP OF BANK TO TOP OF BANK OR THE APPROPRIATE USE OF BARRIERS AT THE CROSSING TO AVOID DISTURBANCE OF THE STREAMBED IS AN ACCEPTABLE OPTION.
- (7) HEAVY EQUIPMENT WORKING IN WETLANDS WITH PERMITTED TEMPORARY IMPACTS SHALL BE PLACED ON MATS, OR OTHER MEASURES MUST BE TAKEN TO MINIMIZE SOIL DISTURBANCE AND COMPACTION UNLESS SPECIFICALLY ADDRESSED IN THE CONSTRUCTION PLANS. ANY MATS AND OTHER MEASURES USED FOR HEAVY EQUIPMENT SHALL BE REMOVED IN THEIR ENTIRETY AFTER THE WORK IS COMPLETED. ALL AFFECTED AREAS SHOULD BE RETURNED TO PRE-EXISTING CONDITIONS.
- (8) WETLANDS SHALL NOT BE USED AS EQUIPMENT STORAGE, STAGING, OR TRANSPORTATION AREAS. UNLESS SPECIFICALLY PROVIDED FOR IN THE CONSTRUCTION PLANS AND PERMITS.
- (9) THE CONTRACTOR SHALL TAKE APPROPRIATE STEPS BEFORE ALL CONSTRUCTION AND MAINTENANCE ACTIVITIES TO ENSURE THAT ENVIRONMENTAL FEATURES (E.G., STREAMS, WETLANDS, SPRINGS, ETC.) ARE NOT IMPACTED BEYOND PERMITTED LOCATIONS. IF THE CONTRACTOR OR TDOCT INSPECTOR IS UNSURE OF THE IDENTITY OF AN ENVIRONMENTAL FEATURE, THE INSPECTOR SHALL CONTACT THE TDOCT REGIONAL ENVIRONMENTAL TECH GROUP IMMEDIATELY.

**UNOFFICIAL
SET
NOT FOR
BIDDING**



STATE OF TENNESSEE
DEPARTMENT OF TRANSPORTATION

**GENERAL
NOTES**

28 JUL 2016 08:46 \\jobprint01\pub\proj\2016\08\06\SR596\SR596\PROJECTS\PROJECTS\Drawn SR 596.PRN 8649900.002016.001

	DATE	YEAR	PROJECT NO.	SHEET NO.
CONST.	2016		73017-4225-04	2C

S.R. 95
73017-4225-04 (CONST.)

ROAD NO. CO.

GENERAL NOTES (CONT.)

SPECIES

- (1) NO ACTIVITY MAY SUBSTANTIALLY DISRUPT THE MOVEMENT OF THOSE SPECIES OF AQUATIC LIFE INDIGENOUS TO THE WATER BODY, INCLUDING THOSE SPECIES THAT NORMALLY MIGRATE THROUGH THE AREA.

INSPECTION, MAINTENANCE & REPAIR

- (2) REFER TO THE STORM WATER POLLUTION AND PREVENTION PLAN DIRECTS (S-1) FOR SWPPP, PERMITS, AND RECORDS NOTES.

PERMITS, PLANS & RECORDS

- (3) THE CONTRACTOR SHALL BE SOLELY RESPONSIBLE FOR AND OBTAIN ANY NECESSARY ENVIRONMENTAL PERMITS OR APPROVALS, INCLUDING BUT NOT LIMITED TO ARCHAEOLOGY, ECOLOGY, HISTORICAL, HAZARDOUS MATERIALS, AIR AND NOISE, TDEC ARAP404, USACE SECTION 404, TVA SECTION 26A, AND TDEC NPDES PERMITS, FROM FEDERAL, STATE AND/OR LOCAL AGENCIES REGARDING ANY MATERIAL AND STAGING AREAS AND THE OPERATION OF ANY PROJECT-DEDICATED ASPHALT AND/OR CONCRETE PLANTS TO BE USED. IF ANY SUCH PERMITS SHALL BE SUPPLIED TO THE TDOT PROJECT RESPONSIBLE PARTY PRIOR TO THE USE OF THE PERMITTED AREA(S).
- (4) ANY DISAGREEMENT BETWEEN THE CONSTRUCTION PLANS THE PROJECT AS CONSTRUCTED, AND THE PERMITS(S) ISSUED FOR THE PROJECT, SHALL BE BROUGHT TO THE ATTENTION OF THE TDOT PROJECT RESPONSIBLE PARTY, THE ENVIRONMENTAL DIVISION, DESIGN DIVISION, AND HEADQUARTERS CONSTRUCTION OFFICE SHALL BE CONTACTED IN THESE INSTANCES AND DECIDE WHICH HAS PRECEDENCE AND WHETHER PERMIT OR PLANS REVISIONS ARE NEEDED. IN GENERAL, PERMIT CONDITIONS WILL PREVAIL.
- (5) IF A CHANGE IN PROJECT SCOPE OCCURS DURING CONSTRUCTION, INCLUDING VALUE ENGINEERING, THE TDOT PERMIT SECTION SHALL BE CONTACTED TO DETERMINE WHETHER PERMIT REVISIONS ARE NEEDED. THE ROADWAY DESIGN DIVISION SHALL BE CONTACTED TO DETERMINE IF ANY PLAN REVISIONS ARE NEEDED.
- (6) THE CONTRACTOR SHALL REVIEW ALL EXISTING PERMITS TO ENSURE THAT WORK AT PERMITTED SITES DOES NOT EXCEED EXPIRATION DATES. IF WORK IS GOING TO BE CONTINUED AFTER EXPIRATION DATES, THE CONTRACTOR SHALL CONTACT THE TDOT PROJECT RESPONSIBLE PARTY TO COMMENCE PERMIT RENEWAL PROCESS.
- (7) ALL WATER QUALITY PERMITS SHALL BE POSTED NEAR THE MAIN ENTRANCE OF THE CONSTRUCTION SITE ACCESSIBLE TO THE PUBLIC. THE NAME, COMPANY NAME, EMAIL ADDRESS, TELEPHONE NUMBER AND ADDRESS OF THE PROJECT SITE OWNER, OPERATOR, OR A LOCAL CONTACT PERSON WITH A BRIEF DESCRIPTION OF THE PROJECT SHALL ALSO BE POSTED. IF POSTING THIS INFORMATION NEAR A MAIN ENTRANCE IS INFEASIBLE, THE INFORMATION SHALL BE PLACED IN A PUBLICLY ACCESSIBLE LOCATION NEAR WHERE THE CONSTRUCTION IS ACTIVELY UNDERWAY AND MONITORED AS NECESSARY. THIS LOCATION SHALL BE POSTED AT THE CONSTRUCTION SITE. ALL POSTINGS SHALL BE MAINTAINED IN LEGIBLE CONDITION.

GOOD HOUSEKEEPING MEASURES & WASTE DISPOSAL

- (8) THE CONTRACTOR SHALL ESTABLISH AND MAINTAIN A PROACTIVE METHOD TO PREVENT LITTER AND CONSTRUCTION WASTES FROM ENTERING WATERS OF THE STATE(S). THESE MATERIALS SHALL BE REMOVED FROM STORMWATER EXPOSURE PRIOR TO ANTICIPATED STORM EVENTS OR BEFORE BEING CARRIED OFFSITE BY WIND, OR OTHERWISE PREVENTED FROM OCCURRING A POLLUTANT COURSE FOR STORMWATER DISCHARGE. AFTER USE, MATERIALS USED FOR EPSC SHALL BE REMOVED FROM THE SITE.
- (9) THE CONTRACTOR SHALL TAKE APPROPRIATE STEPS TO ENSURE THAT PETROLEUM PRODUCTS OR OTHER CHEMICAL POLLUTANTS ARE PREVENTED FROM ENTERING WATERS OF THE STATE(S). ALL EQUIPMENT REFUELING, SERVICING, AND STAGING AREAS SHALL COMPLY WITH ALL LOCAL, STATE, AND FEDERAL LAWS, RULES, REGULATIONS, AND ORDINANCES, INCLUDING THOSE OF THE NATIONAL FIRE PROTECTION ASSOCIATION. APPROPRIATE CONTAINMENT MEASURES FOR THESE AREAS SHALL BE USED.
- (10) CONTRACTORS SHALL PROVIDE DESIGNATED TRUCK WASHOUT AREAS ON THE SITE. THESE AREAS MUST BE SELF-CONTAINED, NOT CONNECTED TO ANY STORMWATER OUTLET OF THE SITE, AND PROPERLY SIGNED. WASH DOWN OR WASTE DISCHARGE OF CONCRETE TRUCKS SHALL NOT BE PERMITTED ONSITE UNLESS PROPER SETTLEMENT AREAS HAVE BEEN PROVIDED IN ACCORDANCE WITH BOTH STATE AND FEDERAL REGULATIONS.

- (11) WHEEL WASH WATER SHALL BE COLLECTED AND ALLOWED TO SETTLE OUT SUSPENDED SOLIDS PRIOR TO DISCHARGE. WHEEL WASH WATER SHALL NOT BE DISCHARGED DIRECTLY INTO ANY STORMWATER SYSTEM OR STORMWATER TREATMENT SYSTEM.
- (12) IF PORTABLE SANITARY FACILITIES ARE PROVIDED ON CONSTRUCTION SITES, SANITARY WASTE SHALL BE COLLECTED FROM THE PORTABLE UNITS IN A TIMELY MANNER BY A LICENSED WASTE MANAGEMENT CONTRACTOR OR AS REQUIRED BY ANY REGULATIONS. THE CONTRACTOR SHALL OBTAIN ANY AND ALL NECESSARY PERMITS TO DISPOSE OF SANITARY WASTE.
- (13) ONLY CONSTRUCTION PRODUCTS NEEDED SHALL BE STORED ONSITE BY THE CONTRACTOR. THE CONTRACTOR SHALL STORE ALL MATERIALS UNDER COVER AND IN APPROPRIATE CONTAINERS. PRODUCTS MUST BE STORED IN ORIGINAL CONTAINERS AND LABELED. MATERIAL MIXING SHALL BE CONDUCTED IN ACCORDANCE WITH THE MANUFACTURER'S RECOMMENDATIONS. THE CONTRACTOR'S RESPONSIBLE PARTY SHALL INSPECT MATERIALS STORAGE AREAS REGULARLY TO ENSURE PROPER USE AND DISPOSAL.
- (14) WHEN POSSIBLE, ALL PRODUCTS SHALL BE USED COMPLETELY BEFORE PROPERLY DISPOSING OF THE CONTAINER OFFSITE. THE MANUFACTURER'S DIRECTIONS FOR DISPOSAL OF MATERIALS AND CONTAINERS SHALL BE FOLLOWED.
- (15) ALL PAINT CONTAINERS SHALL BE TIGHTLY SEALED AND STORED WHEN NOT REQUIRED FOR USE. EXCESS PAINT SHALL BE DISPOSED OF ACCORDING TO THE MANUFACTURER'S INSTRUCTIONS AND APPLICABLE STATE AND LOCAL REGULATIONS.
- (16) ALL HAZARDOUS WASTE MATERIALS SHALL BE DISPOSED OF IN A MANNER WHICH IS COMPLIANT WITH LOCAL OR STATE REGULATIONS. SITE PERSONNEL SHALL BE INSTRUCTED IN THESE PRACTICES, AND THE INDIVIDUAL DESIGNATED AS THE CONTRACTOR'S RESPONSIBLE PARTY SHALL BE RESPONSIBLE FOR SEEING THAT THESE PRACTICES ARE FOLLOWED. THE CONTRACTOR SHALL OBTAIN ANY AND ALL NECESSARY PERMITS TO DISPOSE OF HAZARDOUS MATERIAL.
- (17) OPEN BURNING IS PROHIBITED UNLESS IT IS SPECIFICALLY ALLOWED BY LAW. IF ALLOWED, NATURAL VEGETATION, TREES, AND UNTREATED LUMBER SHALL BE THE ONLY MATERIALS THAT CAN BE OPEN BURNED. THE CONTRACTOR SHALL BE RESPONSIBLE FOR OBTAINING ALL APPLICABLE STATE AND LOCAL PERMITS PRIOR TO ANY BURNING.
- (18) DISPOSAL OF ONSITE VEGETATION AND TREES BY CHIPPING THEM INTO MULCH IS PREFERRED TO OPEN BURNING. THIS MULCH MAY BE USED AS AN ONSITE SOIL STABILIZATION MEASURE WHERE APPROPRIATE.
- (19) WASTE MATERIAL (EARTH, ROCK, ASPHALT CONCRETE, ETC.) NOT REQUIRED FOR THE CONSTRUCTION OF THE PROJECT WILL BE DISPOSED OF BY THE CONTRACTOR. IMPACTS TO WATERS OF THE STATE(S) SHALL BE AVOIDED IF POSSIBLE. IF UNAVOIDABLE THE CONTRACTOR WILL OBTAIN ANY AND ALL NECESSARY PERMITS INCLUDING, BUT NOT LIMITED TO NPDES, AQUATIC RESOURCES ALTERATION PERMITS(S), CORPS OF ENGINEERS SECTION 404 PERMITS, AND TVA SECTION 26A PERMITS TO DISPOSE OF WASTE MATERIALS.

SUPPORT ACTIVITIES

- (20) MATERIALS AND STAGING AREAS SHALL NOT AFFECT ANY WATERS OF THE STATE(S). UNLESS THESE AREAS ARE SPECIFICALLY COVERED BY ENVIRONMENTAL PERMITS, OBTAINED SOLELY BY THE CONTRACTOR, THE CONTRACTOR SHALL TAKE STEPS TO PREVENT POLLUTANTS FROM ENTERING WORK AT PERMITTED SITES DOES NOT EXCEED EXPIRATION DATES. IF WORK IS GOING TO BE CONTINUED AFTER EXPIRATION DATES, THE CONTRACTOR SHALL CONTACT THE TDOT PROJECT RESPONSIBLE PARTY TO COMMENCE PERMIT RENEWAL PROCESS.

**UNOFFICIAL
SET
NOT FOR
BIDDING**

SEALED BY



STATE OF TENNESSEE
DEPARTMENT OF TRANSPORTATION

**GENERAL
NOTES**

TYPE	YEAR	PROJECT NO.	SHEET NO.
CONST.	2016	73017-4225-04	2D

S.R. 95
73017-4225-04 (CONST.) ROAD CO.

SPECIAL NOTES

GRADING

- (1) THE GRADING TABULATIONS AND RESULTING EARTHWORK ASSOCIATED BID QUANTITIES WERE PREPARED UTILIZING AVAILABLE GEOTECHNICAL INFORMATION AND/OR REPORTS PREPARED FOR THIS PROJECT. THIS INFORMATION IS PROVIDED FOR GENERAL INFORMATION AND ESTIMATION GUIDANCE ONLY.
- (2) BORING DEPICTIONS SHOWN ON THE FOUNDATION DATA SHEETS, SOILS SHEETS, PLANS, AND CROSS-SECTIONS INDICATE SOIL AND ROCK CONDITIONS AT THE SPECIFIC BORING LOCATIONS. ANY SOIL PROFILE AND/OR ROCK LINE IS INTERPRETIVE BASED ON THE JUDGMENT OF THE GEOTECHNICAL ENGINEER/GEOLOGIST. THE TRANSITION BETWEEN BORNIS AND LAYERS MAY VARY SIGNIFICANTLY DEPENDING ON THE GEOLOGIC FORMATIONS ENCOUNTERED.
- (3) TO ASSIST IN BID PREPARATION FOR EARTHWORK AND FOUNDATION CONSTRUCTION, DETAIL ROCK AND SOIL DESCRIPTION AND ON SOME PROJECTS, ROCK CORE SAMPLES ARE AVAILABLE FOR INSPECTION AT THE MATERIALS AND TESTS HEADQUARTERS AT 8801 CENTENNIAL BOULEVARD, NASHVILLE, TN OR AT THE TDOT REGION 1 BUILDING IN KNOXVILLE, TN.
- (4) THE CONTRACTOR SHALL UTILIZE ALL INFORMATION PROVIDED IN THE PLANS, CROSS-SECTIONS AND CONTRACT DOCUMENTS INCLUDING ANY SPECIAL PROVISIONS AS WELL AS UTILIZING HIS PAST EXPERIENCE WITH PROJECTS OF SIMILAR NATURE, SCOPE AND LOCATION IN PREPARATION OF HIS BID FOR EARTHWORK ITEMS. IT IS THE CONTRACTOR'S RESPONSIBILITY TO DETERMINE AND PROVIDE EQUIPMENT AND MEANS NECESSARY TO CONDUCT THE EXCAVATION ACTIVITIES IN ACCORDANCE WITH PLANS AND SPECIFICATIONS.
- (5) EARTHWORK IS PAID FOR UNDER ITEM 203-01, ROAD AND DRAINAGE EXCAVATION (UNCLASSIFIED). NO ADDITIONAL PAYMENT WILL BE MADE FOR EARTHWORK QUANTITIES BASED SOLELY ON A CLAIM THAT THE QUANTITIES SHOWN IN THE GRADING TABULATION OR ELSEWHERE IN THE PLANS ARE INACCURATE WITH RESPECT TO THE TYPE OF MATERIALS ENCOUNTERED DURING CONSTRUCTION EXCEPT AS PROVIDED FOR BY SECTION 104-02 IN THE CURRENT EDITION OF THE STANDARD SPECIFICATIONS FOR ROAD AND BRIDGE CONSTRUCTION OR AS AMENDED IN SUPPLEMENTAL SPECIFICATIONS.

DEMOLITION

DEMOLITION, REPAIR, OR REHABILITATION OF BRIDGES

- (6) THE CONTRACTOR SHALL VERIFY THAT AN ASBESTOS SURVEY HAS BEEN COMPLETED PRIOR TO ANY DEMOLITION, REPAIR OR REHABILITATION ACTIVITIES (NOT INCLUDING ASPHALT MILLING OR OVERLAY).
- (7) ASBESTOS-CONTAINING MATERIALS (ACM) ABATEMENT IS THE RESPONSIBILITY OF THE CONTRACTOR AND SHALL BE COMPLETED PRIOR TO ANY DEMOLITION, REPAIR OR REHABILITATION OF BRIDGES). ABATEMENT SHOULD BE ACCOMPLISHED PER SPECIFICATIONS, SPECIAL PROVISION REGARDING REMOVAL OF ASBESTOS-CONTAINING MATERIALS, STATE OF TENNESSEE ASBESTOS ACCREDITATION REQUIREMENTS (TCA 120-01-20) MANDATE THAT ACM ABATEMENT WORK BE PERFORMED BY AN ACCREDITED FIRM (CONTRACTOR) USING ACCREDITED ABATEMENT WORKERS AND SUPERVISORS.
- (8) THE CONTRACTOR SHALL BE RESPONSIBLE FOR SUBMITTING A NOTICE TO THE TDEC, DIVISION OF AIR POLLUTION CONTROL, TEN (10) DAYS IN ADVANCE OF ANY ACM ABATEMENT, DEMOLITION, OR MAJOR REPAIR INVOLVING THE REMOVAL/REPLACEMENT OF A STRUCTURAL COMPONENT.

EROSION PREVENTION AND SEDIMENT CONTROL

ENVIRONMENTAL

- (9) STAFF FROM THE TDOT ENVIRONMENTAL DIVISION COMPLIANCE AND FIELD SERVICES OFFICE SHALL BE INVITED TO ALL PRE-CONSTRUCTION MEETINGS.

ECOLOGY

- (10) STAFF FROM THE TDOT ENVIRONMENTAL DIVISION OR A DESIGNEE SHALL ADVISE THE CONTRACTOR DURING THE PRE-CONSTRUCTION MEETING WHEN ENVIRONMENTAL DIVISION PERSONNEL OR A DESIGNATED CONSULTANT WILL NEED TO BE ONSITE FOR WORK BEING DONE WHICH COULD AFFECT WATERS OF THE STATE/ U.S. OR SPECIES.

- (11) STAFF FROM THE TDOT ENVIRONMENTAL DIVISION OR A DESIGNEE SHALL ATTEND THE PRE-CONSTRUCTION MEETING FOR ALL PROJECTS WHICH HAVE THREATENED OR ENDANGERED SPECIES OR CRITICAL HABITAT PROXIMAL TO SCHEDULED WORK. THIS WILL PROVIDE THE OPPORTUNITY TO ENSURE THAT PERSONNEL INCLUDING THE CONTRACTOR'S PERSONNEL AND SUBCONTRACTORS ARE MADE AWARE OF THE NECESSARY PRECAUTIONS THAT MUST BE FOLLOWED.
- (12) ALL PROJECTS WITH LEGALLY PROTECTED SPECIES OR CRITICAL HABITAT IDENTIFIED SHALL HAVE MEASURES IN PLACE TO CONTAIN CONCRETE DUST, CEMENT DUST AND ALL OTHER MATERIALS. THESE MATERIALS ARE NOT ALLOWED TO ENTER WATERS OF THE STATE/ U.S.

PROJECT COMMITMENTS

- (13) SEE PROJECT COMMITMENTS, SHEET 4B, FOR DETAILS RELATING TO SPECIAL ENVIRONMENTAL COMMITMENTS REQUIRED BY THIS PROJECT.

SPECIAL NOTES

STREAMS, WETLANDS & BUFFER ZONES

- (14) FOR TEMPORARY WETLAND IMPACT AREAS, REMOVE THE TOP TWELVE (12") OF TOPSOIL AND STOCKPILE IT UNTIL CONSTRUCTION IS COMPLETE. ONCE CONSTRUCTION ACTIVITIES ARE COMPLETED, RESTORE ALL TEMPORARY WETLAND IMPACT AREAS TO PRE-CONSTRUCTION CONDITIONS. THIS INCLUDES REMOVING HAIL ROADS (IF APPLICABLE), RESTORING THE SITE TO THE ORIGINAL (PRE-CONSTRUCTION) ELEVATION AND SPREADING STOCKPILED TOPSOIL BACK OVER THE WETLAND SITE. THE AREA OF TEMPORARY IMPACTS WILL BE STABILIZED ACCORDING TO STANDARD PRACTICES.

SCOPE OF WORK

- (15) THIS PROJECT INCLUDES THE CONSTRUCTION OF 2@ 10' X 8' BOX BRIDGE EXTENSIONS ON S.R. 95 AT BEAR CREEK.
- (16) THIS PROJECT INCLUDES THE GRADING, DRAINAGE, BASE, AND PAVEMENT FOR S.R. 95 TO LINES AND GRADES AS INDICATED ON THE TYPICAL CROSS-SECTIONS, PLAN, AND PROFILE SHEETS OR AS DIRECTED BY THE T.D.O.T. OPERATIONS DISTRICT SUPERVISOR.
- (17) THIS PROJECT INCLUDES THE CONSTRUCTION OF ALL DITCHES, GUARDRAIL, APPLICATION OF EROSION PREVENTION AND SEDIMENT CONTROL DEVICES, SCHEDING, PAVEMENT MARKINGS, INSTALLATION OF TRAFFIC CONTROL DEVICES AND OTHER DESIGN FEATURES AS INDICATED ON THE PLANS OR AS DIRECTED BY THE T.D.O.T. OPERATIONS SUPERVISOR.

2016-08-04 10:00 AM 73017-4225-04 2D

UNOFFICIAL
SET
NOT FOR
BIDDING



STATE OF TENNESSEE
DEPARTMENT OF TRANSPORTATION

SPECIAL NOTES
AND
SCOPE OF WORK

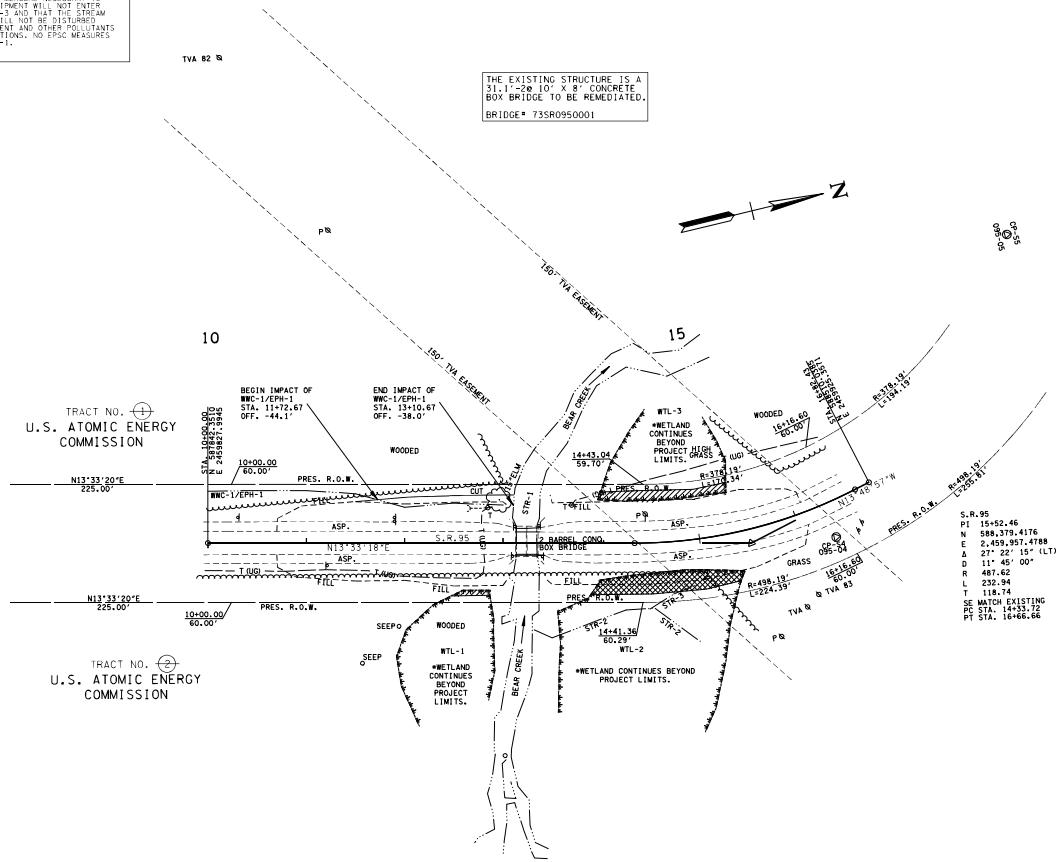
TYPE	YEAR	PROJECT NO.	SHEET NO.
UTIL.	2015	73017-4223-04	4
CONST.	2016	73017-4225-04	4

S. R. 95
73017-4223-04 (UTIL.)
73017-4225-04 (CONST.)

ROAD NO. 10

NOTE
THE CONTRACTOR SHALL USE ANY MEASURE NECESSARY TO ENSURE THAT CONSTRUCTION EQUIPMENT WILL NOT ENTER ANY PORTION OF STR-2 AND STR-3 AND THAT THE STREAM AND SURROUNDING VEGETATION WILL NOT BE DISTURBED AND BE PROTECTED FROM SEDIMENT AND OTHER POLLUTANTS EXCEPT AT THE PERMITTED LOCATIONS. NO EPCIS MEASURES SHALL BE PLACED IN WWC-1/EPPH-1.

THE EXISTING STRUCTURE IS A 31.1'-26.10' X 8' CONCRETE BOX BRIDGE TO BE REMEDIATED. BRIDGE# 73SR0950001



TRACT NO. 10
U.S. ATOMIC ENERGY COMMISSION

TRACT NO. 15
U.S. ATOMIC ENERGY COMMISSION

S. R. 95
PI 15+02.46
N 589.379, 4176
E 2,409.997, 4788
A 27° 22' 15" (LT)
D 11' 45" 00"
R 487.62
L 232.94
T 126.74
SE MATCH EXISTING
PC STA. 14+33.32
PT STA. 16+66.66

S. R. 95 CONTROL POINTS

POINT	NORTH	EAST	ELEV.	FEATURE	GPS POINT	STATION	OFFSET
54	588464.7778	2459971.7500	811.48	VCP	73-09B-04	16+05.55	35.85' (RT)
55	588705.4564	2459713.3450	809.83	VCP	73-09S-05		

LEGEND	WETLAND IMPACTS (WTL-1)	WETLAND IMPACTS (WTL-2)	WETLAND IMPACTS (WTL-3)
	AREA OF PERMANENT IMPACT = 0 AC. VOLUME OF PERMANENT IMPACT = 0 C.Y.	AREA OF PERMANENT IMPACT = 0.06 AC. VOLUME OF PERMANENT IMPACT = 103 C.Y.	AREA OF PERMANENT IMPACT = 0 AC. VOLUME OF PERMANENT IMPACT = 0 C.Y.
	AREA OF TEMPORARY IMPACT = 0.004 AC. VOLUME OF TEMPORARY IMPACT = 7 C.Y.	AREA OF TEMPORARY IMPACT = 0 AC. VOLUME OF TEMPORARY IMPACT = 0 C.Y.	AREA OF TEMPORARY IMPACT = 0.03 AC. VOLUME OF TEMPORARY IMPACT = 47 C.Y.

UNOFFICIAL SET NOT FOR BIDDING



COORDINATES ARE NAD83/9995. ARE DATUM ADJUSTED BY THE FACTOR OF 1.000080 AND TIED TO THE TERN. ALL ELEVATIONS ARE REFERENCED TO THE NAVD 88M.

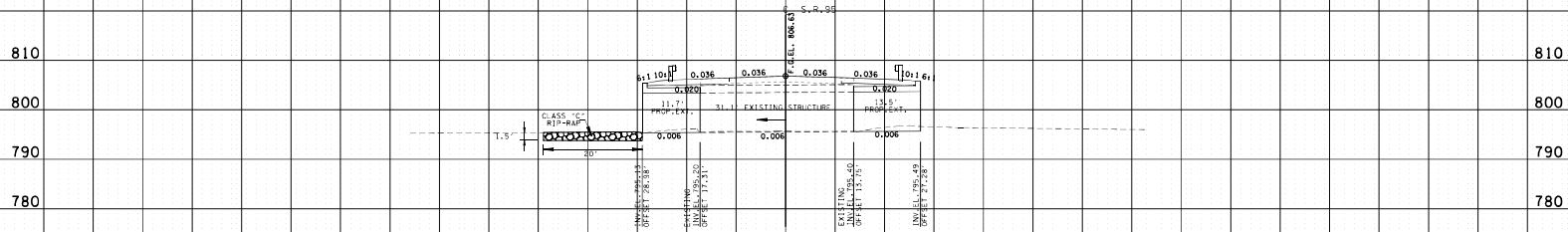
STATES OF TENNESSEE
DEPARTMENT OF TRANSPORTATION

PRESENT LAYOUT
STA. 10+00 TO STA. 16+82.43
SCALE: 1" = 50'

73-011-008-0464 UNOFFICIAL FOR INFORMATION ONLY. NOT FOR CONSTRUCTION. DESIGN PROJECTS: REGION 5R 95 PIN #49500.00/404/INT

TYPE	YEAR	PROJECT NO.	SHEET NO.
UTIL.	2015	73017-4225-04	5
CONST.	2016	73017-4225-04	5

S. R. 95
73017-4225-04 (UTIL.) ROANE CO.
73017-4225-04 (CONST.)



STATION	13+24
STRUCTURE	56.3' - 2610'X8' CONC. BOX BRIDGE (31.1' EXIST., 25.2' PROPOSED EXTENSION)
SKIEW	90°
DRAINAGE AREA	4.0 SQ. MI.
DESIGN DISCHARGE (0100)	1180 CFS
DESIGN DISCHARGE (0500)	1610 CFS
OVERTOPPING ELEV.	806.50
050 HEADWATER ELEV.	803.57
0100 HEADWATER ELEV.	805.46
VELOCITY (0100)	12.2 FT/S
INLET ELEVATION	795.49
OUTLET ELEVATION	795.13
STANDARD DRAWING NUMBERS	STD-17-1, STD-17-26, STD-11-75
CLASS 'A' CONCRETE	143.0 C.Y.
STEEL BAR REINFORCING	23,495 LB.
FOUNDATION FILL MATERIAL	52.0 C.Y.

**UNOFFICIAL
SET
NOT FOR
BIDDING**



SEALED BY
ERIC S. WILCOX
STATE OF TENNESSEE
DEPARTMENT OF TRANSPORTATION
**BOX BRIDGE
CROSS-SECTION**
SCALE: 1"=10' HORIZ.
1"=10' VERT.

27-JUL-2016 8:06 AM \\sdr02\cadd\mtr\mtr\sub\paved\curves\DESIGN\PROJECTS\Roane_S.R.95_PN\BRIDGE\05.dwg

TRAFFIC CONTROL NOTES

THE CONSTRUCTION SIGNING PLANS ARE TO SERVE AS A GUIDE ONLY. OTHER SIGNS MAY BE REQUIRED DURING VARIOUS PHASES OF CONSTRUCTION.

THIS TRAFFIC CONTROL PLAN DOES NOT RELIEVE THE CONTRACTOR OF THE RESPONSIBILITY OF INSTALLING TRAFFIC CONTROL DEVICES IN ACCORDANCE WITH THE CURRENT EDITION OF THE MANUAL ON UNIFORM TRAFFIC CONTROL DEVICES.

THE CONTRACTOR IS TO MAINTAIN ACCESS TO ALL LOCAL PROPERTY OWNERS.

2 FLAGS ARE TO BE MOUNTED ON ALL ROAD WORK ADVANCE WARNING SIGNS. FLAGS ARE TO BE 18"X18" AND FLUORESCENT RED-ORANGE IN COLOR. COST OF FLAGS IS TO BE INCLUDED IN THE COST OF OTHER ITEMS.

ALL CONSTRUCTION SIGNS ON S.R. 95 AND BEAR CREEK ROAD SHALL BE COVERED WHEN WORK WILL NOT BE AFFECTING TRAFFIC. COST OF COVERING (CONCRETING SIGNS SHALL NOT BE MEASURED AND PAID FOR SEPARATELY, BUT ALL COST SHALL BE INCLUDED IN THE ORIGINAL UNIT PRICE BID FOR ITEM NO. 712-06, SIGNS CONSTRUCTION) PER SQUARE FOOT.

ALL TRAFFIC CONTROL DEVICES SHALL BE APPROVED BY THE TDOT OPERATIONS ENGINEER.



CONSTRUCTION SIGN TABULATION

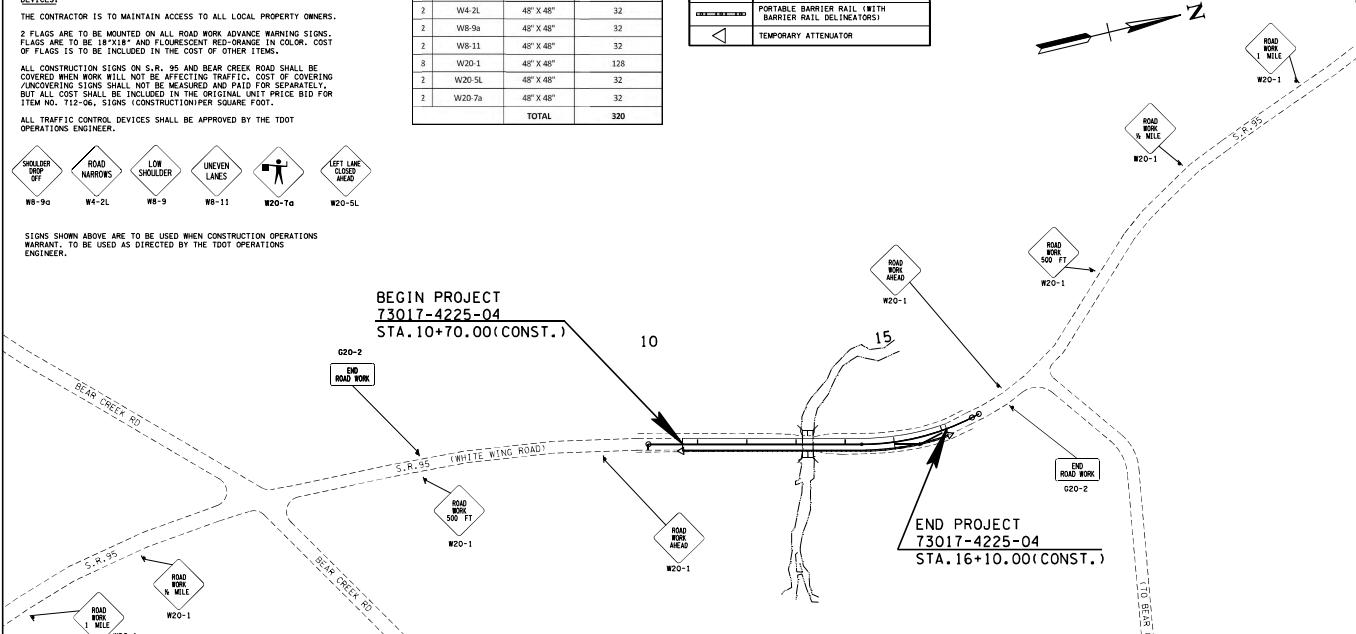
ITEM NO. 712-06

NO.	TYPE	SIZE	QUANTITY (S.F.)
2	G20-2	48" X 48"	32
2	W4-2L	48" X 48"	32
2	WB-9a	48" X 48"	32
2	WB-11	48" X 48"	32
8	W20-1	48" X 48"	128
2	W20-5L	48" X 48"	32
2	W20-7a	48" X 48"	32
TOTAL			320

TRAFFIC CONTROL LEGEND

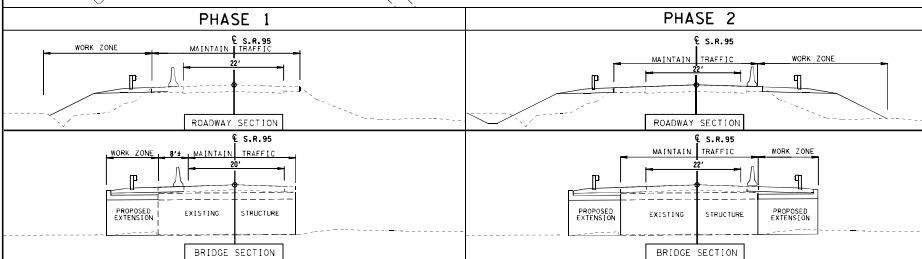
SYMBOL	ITEM
◊	FLEXIBLE DRUMS (CHANNELIZING)
▶	SIGN (CONSTRUCTION)
▬▬▬▬▬▬	PORTABLE BARRIER RAIL (WITH BARRIER RAIL DELINEATORS)
◁	TEMPORARY ATTENUATOR

TYPE	YEAR	PROJECT NO.	SHEET NO.
CONST.	2016	73017-4225-04	9
S.R. 95 73017-4225-04 (CONST.)			ROANE CO.



BEGIN PROJECT
73017-4225-04
STA. 10+70.00 (CONST.)

END PROJECT
73017-4225-04
STA. 16+10.00 (CONST.)



CONSTRUCT WEST EXTENSION OF BRIDGE AND ROADWAY APPROACH SHOULDERS; MAINTAIN TRAFFIC ON EASTERN EXISTING PORTION OF BRIDGE AND APPROACH.

CONSTRUCT EAST EXTENSION OF BRIDGE AND ROADWAY APPROACH SHOULDERS; MAINTAIN TRAFFIC ON WESTERN EXISTING PORTION OF BRIDGE AND APPROACH.

UNOFFICIAL
SET
NOT FOR
BIDDING



STATE OF TENNESSEE
DEPARTMENT OF TRANSPORTATION

TRAFFIC CONTROL PLAN

STA. 10+70.00 TO STA. 16+10.00
SCALE: 1"=100'

24-JUL-2016 10:46 AM
 \\s01mfr01\pub\cadd\mfr\mfr\work\4225\DESIGN\PROJECTS\Roanoke SR 95 PKN 84965.00\020.dwg

TYPE	YEAR	PROJECT NO.	SHEET NO.
CONST.	2016	7307-1-4225-04	9A

S.R. 95
7307-1-4225-04 (CONST.) ROANE CO.

PAVEMENT EDGE DROP-OFF TRAFFIC CONTROL NOTES

A. DIFFERENCES IN ELEVATION BETWEEN ADJACENT TRAFFIC LANES OR TRAFFIC LANE AND SHOULDER WHERE THE TRAFFIC LANE IS BEING USED BY TRAFFIC, CAUSED BY BASE, PAVING OR RESURFACING.

- DIFFERENCES IN ELEVATION BETWEEN ADJACENT ROADWAY ELEMENTS GREATER THAN 0.75 INCH AND NOT EXCEEDING 2 INCHES.
 - WARNING SIGNS, UNEVEN LANES (W8-11) AND/OR SHOULDER DROP-OFF WITH PLAQUE (W8-17 AND W8-17P) SHALL BE PLACED IN ADVANCE OF AND THROUGHOUT THE EXPOSED AREA. MAXIMUM SPACING BETWEEN SIGNS SHALL BE 2,000 FEET WITH A MINIMUM OF 2 SIGNS PER EXPOSED AREA. WHERE UNEVEN PAVEMENT IS ENCOUNTERED, SIGNS SHALL BE PLACED ON EACH SIDE OF THE ROADWAY.
 - DIFFERENCES IN ELEVATION BETWEEN ADJACENT TRAFFIC LANES BEING UTILIZED BY TRAFFIC AND SHOULDER PAVEMENT SHALL BE ELIMINATED WITHIN THREE WORKDAYS.
 - DIFFERENCES IN ELEVATION BETWEEN ADJACENT TRAFFIC LANES BEING UTILIZED BY TRAFFIC CAUSED BY COLD PLACING SHALL BE ELIMINATED WITHIN THREE WORKDAYS.
 - WHEN THE DIFFERENCE IN ELEVATION IS BETWEEN THE TRAFFIC LANE BEING UTILIZED BY TRAFFIC AND SHOULDER, THE DIFFERENCE IN ELEVATION SHALL BE ELIMINATED WITHIN SEVEN WORKDAYS AFTER THE CONDITION IS CREATED.

2. DIFFERENCES IN ELEVATION BETWEEN ADJACENT ROADWAY ELEMENTS GREATER THAN 2 INCHES AND NOT EXCEEDING 6 INCHES. TRAFFIC IS NOT TO BE ALLOWED TO TRAVERSE THIS DIFFERENCE IN ELEVATION.

- SEPARATION SHALL BE ACCOMPLISHED BY DRUMS, BARRICADES OR OTHER APPROVED DEVICES IN ACCORDANCE WITH THE FOLLOWING:
 - WHERE POSTED SPEEDS ARE 50 MPH OR GREATER, SPACING OF THE PROTECTIVE DEVICES SHALL NOT EXCEED 100 FEET.
 - WHERE POSTED SPEEDS ARE LESS THAN 50 MPH, THE MAXIMUM SPACING OF THE PROTECTIVE DEVICES IN FEET SHALL NOT EXCEED TWICE THE POSTED SPEED IN MILES PER HOUR OR 50 FEET, WHICHEVER SPACING IS GREATER.
- IF THE DIFFERENCE IN ELEVATION IS ELIMINATED OR DECREASED TO 2 INCHES OR LESS BY THE END OF EACH WORKDAY, CONES MAY BE USED DURING DAYTIME HOURS IN LIEU OF DRUMS, BARRICADES OR OTHER APPROVED PROTECTIVE DEVICES MENTIONED IN PARAGRAPH a. PROVIDED WARNING SIGNS ARE ERRECTED. WARNING SIGNS (UNEVEN LANES AND/OR SHOULDER DROP-OFF) SHALL BE PLACED IN ADVANCE OF AND THROUGHOUT THE EXPOSED AREA. MAXIMUM SPACING BETWEEN SIGNS SHALL BE 2,000 FEET WITH A MINIMUM OF 2 SIGNS PER EXPOSED AREA. WHERE UNEVEN PAVEMENT IS ENCOUNTERED, SIGNS SHALL BE PLACED ON EACH SIDE OF THE ROADWAY.

3. WHEN THE DIFFERENCE IN ELEVATION IS BETWEEN THE THROUGH TRAFFIC LANE AND THE SHOULDER AND THE ELEVATION DIFFERENCE IS LESS THAN 0.6 INCHES, THE CONTRACTOR MAY USE WARNING SIGNS AND/OR PROTECTIVE DEVICES AS APPLICABLE AND APPROVED BY THE ENGINEER. SEE PARAGRAPH 4 REGARDING USE OF DRUMS, BARRICADES OR OTHER APPROVED PROTECTIVE DEVICES. WARNING SIGNS (UNEVEN LANES AND/OR SHOULDER DROP-OFF) WILL BE PLACED IN ADVANCE OF AND THROUGHOUT THE EXPOSED AREA. MAXIMUM SPACING BETWEEN SIGNS SHALL BE 2,000 FEET WITH A MINIMUM OF 2 SIGNS PER EXPOSED AREA. WHERE UNEVEN PAVEMENT IS ENCOUNTERED, SIGNS SHALL BE PLACED ON EACH SIDE OF THE ROADWAY.

IN THESE SITUATIONS, THE CONTRACTOR SHALL LIMIT HIS OPERATIONS TO ONE WORK ZONE NOT EXCEEDING 2 MILES IN LENGTH UNLESS OTHERWISE NOTED ON THE PLANS OR APPROVED BY THE ENGINEER. ONCE THE CONTRACTOR BEGINS WORK IN A WORK ZONE, A CONTINUOUS OPERATION SHALL BE MAINTAINED UNTIL THE DIFFERENCE IN ELEVATION IS ELIMINATED. SIMULTANEOUS WORK ON SEPARATE ROADWAYS OF DIVIDED HIGHWAYS WILL BE CONSIDERED INDEPENDENTLY IN REGARD TO RESTRICTION OF WORK ZONE ACTIVITY.

3. DIFFERENCES IN ELEVATION BETWEEN ADJACENT ROADWAY ELEMENTS GREATER THAN 6 INCHES BUT NOT EXCEEDING 18 INCHES, THE CONTRACTOR, WITH THE ENGINEER'S APPROVAL, MAY UTILIZE ONE OF THE FOLLOWING:

- THE CONTRACTOR SHALL ACCOMPLISH SEPARATION BY DRUMS, BARRICADES OR OTHER APPROVED DEVICES IN ACCORDANCE WITH THE FOLLOWING:
 - WHERE POSTED SPEEDS ARE 50 MPH OR GREATER, SPACING OF THE PROTECTIVE DEVICES SHALL NOT EXCEED 100 FEET.
 - WHERE POSTED SPEEDS ARE LESS THAN 50 MPH, THE MAXIMUM SPACING OF THE PROTECTIVE DEVICES IN FEET SHALL NOT EXCEED TWICE THE POSTED SPEED IN MILES PER HOUR OR 50 FEET, WHICHEVER SPACING IS GREATER.

IN ORDER TO USE THIS METHOD, THE CONTRACTOR MUST REDUCE THE DIFFERENCE IN ELEVATION TO 6 INCHES OR LESS BY THE END OF THE WORKDAY THAT THE CONDITION IS CREATED.

- THE CONTRACTOR SHALL PROVIDE DRUMS, BARRICADES OR OTHER APPROVED SEPARATION DEVICES AS SPECIFIED IN PARAGRAPH 4 AND IF THE LOWER ELEVATION IS AT OR BELOW THE LOWER ELEVATION IS AT OR BELOW SUBGRADE AT THE END OF EACH DAY.
- THE CONTRACTOR SHALL PROVIDE DRUMS, BARRICADES OR OTHER APPROVED SEPARATION DEVICES AS SPECIFIED IN PARAGRAPH 4 AND IF THE LOWER ELEVATION IS AT OR BELOW SUBGRADE AT THE END OF EACH DAY.
- THE CONTRACTOR SHALL PROVIDE DRUMS, BARRICADES OR OTHER APPROVED SEPARATION DEVICES AS SPECIFIED IN PARAGRAPH 4 AND IF THE LOWER ELEVATION IS AT OR BELOW SUBGRADE AT THE END OF EACH DAY.
- THE CONTRACTOR SHALL PROVIDE SEPARATION BY PORTABLE BARRIER RAIL.

FOR PRECEDING CONDITIONS a, b, and c, THE CONTRACTOR SHALL USE THE SHOULDER DROP-OFF WARNING SIGN WITH PLAQUE (W8-17 AND W8-17P). IT SHALL BE PLACED IN ADVANCE OF AND THROUGHOUT THE EXPOSED AREA. MAXIMUM SPACING BETWEEN SIGNS SHALL BE 2,000 FEET WITH A MINIMUM OF 2 SIGNS PER EXPOSED AREA. IN THESE SITUATIONS, THE CONTRACTOR SHALL LIMIT HIS OPERATIONS TO ONE WORK ZONE NOT EXCEEDING 2 MILES IN LENGTH UNLESS OTHERWISE NOTED ON THE PLANS OR APPROVED BY THE ENGINEER. ONCE THE CONTRACTOR BEGINS WORK IN A WORK ZONE, A CONTINUOUS OPERATION SHALL BE MAINTAINED UNTIL THE DIFFERENCE IS ELIMINATED. SIMULTANEOUS WORK ON SEPARATE ROADWAYS OF DIVIDED HIGHWAYS WILL BE CONSIDERED INDEPENDENTLY IN REGARD TO RESTRICTION OF WORK ZONE ACTIVITY.

4. FOR DIFFERENCES IN ELEVATION BETWEEN ADJACENT ROADWAY ELEMENTS GREATER THAN 18 INCHES, SEPARATION WILL BE PROVIDED BY USE OF PORTABLE BARRIER RAIL.

IN THIS SITUATION THE CONTRACTOR SHALL LIMIT HIS OPERATIONS TO ONE WORK ZONE NOT EXCEEDING 2 MILES IN LENGTH UNLESS OTHERWISE NOTED ON THE PLANS OR APPROVED BY THE ENGINEER. ONCE THE CONTRACTOR BEGINS WORK IN A WORK ZONE, A CONTINUOUS OPERATION SHALL BE MAINTAINED UNTIL THE DIFFERENCE IN ELEVATION IS ELIMINATED. SIMULTANEOUS WORK ON SEPARATE ROADWAYS OF DIVIDED HIGHWAYS WILL BE CONSIDERED INDEPENDENTLY IN REGARD TO RESTRICTION OF WORK ZONE ACTIVITY.

B. IF THE DIFFERENCE IN ELEVATION IS WITHIN 30 FEET OF THE NEAREST TRAFFIC LANE BEING USED BY TRAFFIC CAUSED BY GRADING, EXCAVATION OR UTILITIES, DRAINAGE STRUCTURES, UNDERCUTTING, ETC.:

- IF THE DIFFERENCE IN ELEVATION IS WITHIN 8 FEET OF THE NEAREST TRAFFIC LANE WITH DIFFERENCE IN ELEVATION GREATER THAN 3/4 INCH AND NOT EXCEEDING 2 INCHES.

WARNING SIGNS (UNEVEN LANES AND/OR SHOULDER DROP-OFF) SHALL BE PLACED IN ADVANCE OF AND THROUGHOUT THE EXPOSED AREA. MAXIMUM SPACING BETWEEN SIGNS SHALL BE 2,000 FEET WITH A MINIMUM OF 2 SIGNS PER EXPOSED AREA. WHERE UNEVEN PAVEMENT IS ENCOUNTERED, SIGNS SHALL BE PLACED ON EACH SIDE OF THE ROADWAY.

2. IF THE DIFFERENCE IN ELEVATION IS WITHIN 8 FEET OF THE NEAREST TRAFFIC LANE WITH DIFFERENCE IN ELEVATION GREATER THAN 2 INCHES AND NOT EXCEEDING 6 INCHES:

- SEPARATION SHALL BE ACCOMPLISHED BY DRUMS, BARRICADES OR OTHER APPROVED DEVICES IN ACCORDANCE WITH THE FOLLOWING:
 - WHERE POSTED SPEEDS ARE 50 MPH OR GREATER, SPACING OF THE PROTECTIVE DEVICES SHALL NOT EXCEED 100 FEET.
 - WHERE POSTED SPEEDS ARE LESS THAN 50 MPH, THE MAXIMUM SPACING OF THE PROTECTIVE DEVICES IN FEET SHALL NOT EXCEED TWICE THE POSTED SPEED IN MILES PER HOUR OR 50 FEET, WHICHEVER SPACING IS GREATER.

3. IF THE DIFFERENCE IN ELEVATION IS WITHIN 8 FEET OF THE NEAREST TRAFFIC LANE WITH DIFFERENCE IN ELEVATION GREATER THAN 6 INCHES:

- SEPARATION SHALL BE ACCOMPLISHED BY DRUMS, BARRICADES OR OTHER APPROVED DEVICES IN ACCORDANCE WITH THE FOLLOWING:
 - WHERE POSTED SPEEDS ARE 50 MPH OR GREATER, SPACING OF THE PROTECTIVE DEVICES SHALL NOT EXCEED 100 FEET.
 - WHERE POSTED SPEEDS ARE LESS THAN 50 MPH, THE MAXIMUM SPACING OF THE PROTECTIVE DEVICES IN FEET SHALL NOT EXCEED TWICE THE POSTED SPEED IN MILES PER HOUR OR 50 FEET, WHICHEVER SPACING IS GREATER.
- ELIMINATE VERTICAL OFFSET BY CONSTRUCTING A STONE WEDGE OR GRADING TO A 4:1 SLOPE, OR FLATTER, OR USE PORTABLE BARRIER RAIL.

THE CONTRACTOR SHALL SCHEDULE THE WORK SO AS TO MINIMIZE THE TIME TRAFFIC IS EXPOSED TO AN ELEVATION DIFFERENCE. ONCE THE CONTRACTOR BEGINS AN ACTIVITY THAT CREATES AN ELEVATION DIFFERENCE WITHIN 8 FEET OF A TRAFFIC LANE, THE ACTIVITY SHALL BE PURSUED AS A CONTINUOUS OPERATION UNTIL THE ELEVATION DIFFERENCE IS ELIMINATED.

C. IF THE DIFFERENCE IN ELEVATION IS FARTHER THAN 8 FEET FROM THE NEAREST TRAFFIC LANE BUT NOT MORE THAN 30 FEET FROM THE NEAREST TRAFFIC LANE:

SEPARATION SHALL BE ACCOMPLISHED BY DRUMS, BARRICADES OR OTHER APPROVED DEVICES IN ACCORDANCE WITH THE FOLLOWING:

- WHERE POSTED SPEEDS ARE 50 MPH OR GREATER, SPACING OF THE PROTECTIVE DEVICES SHALL NOT EXCEED 100 FEET.
- WHERE POSTED SPEEDS ARE LESS THAN 50 MPH, THE MAXIMUM SPACING OF THE PROTECTIVE DEVICES IN FEET SHALL NOT EXCEED TWICE THE POSTED SPEED IN MILES PER HOUR OR 50 FEET, WHICHEVER SPACING IS GREATER.

THE CONTRACTOR SHALL SCHEDULE THE WORK SO AS TO MINIMIZE THE TIME TRAFFIC IS EXPOSED TO AN ELEVATION DIFFERENCE. ONCE THE CONTRACTOR BEGINS AN ACTIVITY THAT CREATES AN ELEVATION DIFFERENCE, THE ACTIVITY SHALL BE PURSUED AS A CONTINUOUS OPERATION UNTIL THE ELEVATION DIFFERENCE IS ELIMINATED.


UNOFFICIAL

SET

NOT FOR

BIDDING

SEALED BY



STATE OF TENNESSEE
DEPARTMENT OF TRANSPORTATION

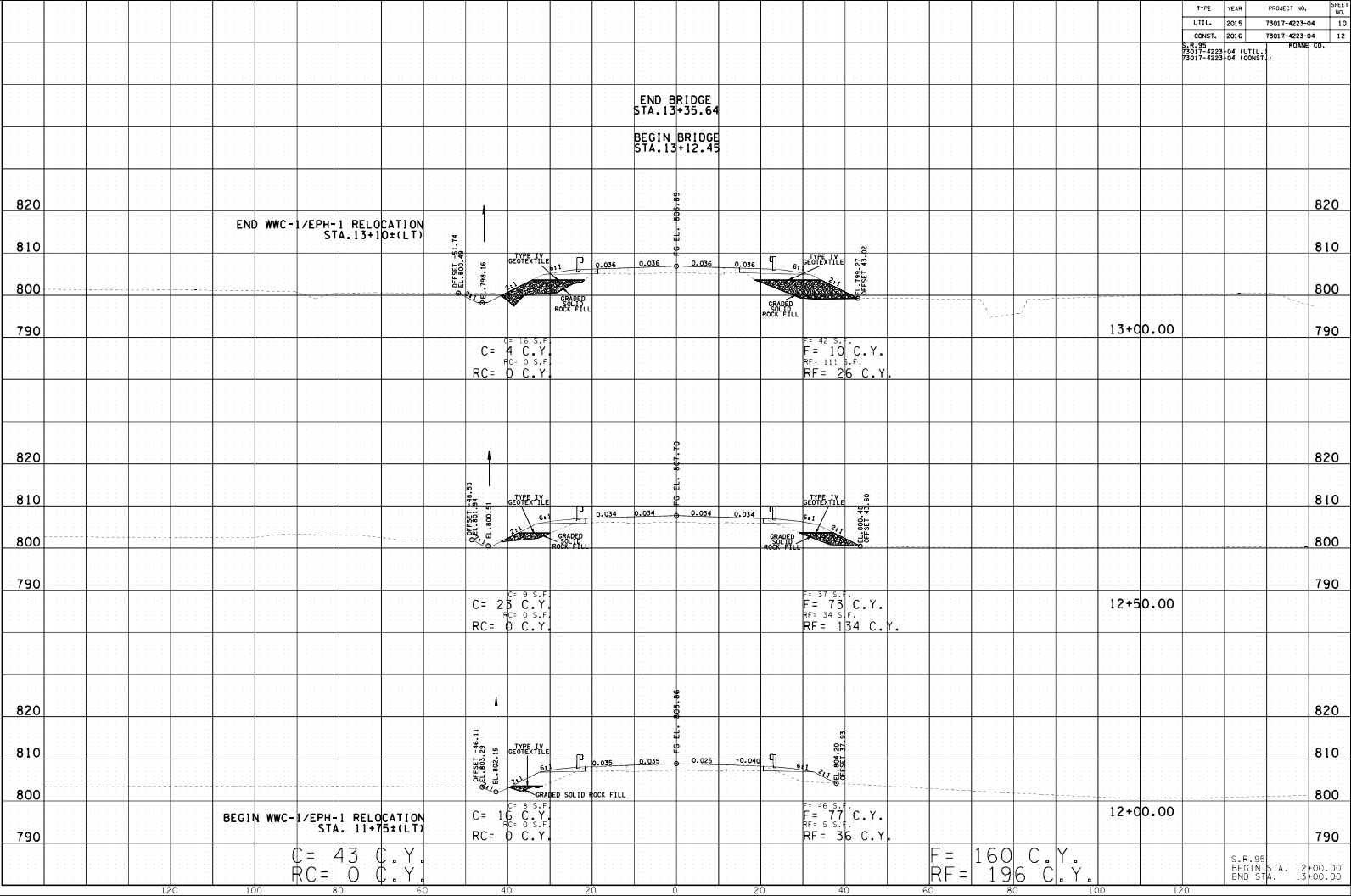
STATE OF TENNESSEE
DEPARTMENT OF TRANSPORTATION

**PAVEMENT EDGE
DROP-OFF
TRAFFIC CONTROL
NOTES**

TYPE	YEAR	PROJECT NO.	SHEET NO.
UTIL.	2015	73017-4223-04	10
CONST.	2016	73017-4223-04	12

S.R. 95
73017-4223-04 (UTIL.)
73017-4223-04 (CONST.)

27-JUL-2016 09:01 \\bluel2016\projects\11\sub\pwr\curves\DESIGN\PROJECTS\11\000_05_P11_BLRD\50\DISP\SSW\sheet12.dwg



C = 43 C.Y.
RC = 0 C.Y.

F = 160 C.Y.
RF = 196 C.Y.

S.R. 95
BEGIN STA. 12+00.00
END STA. 13+00.00

